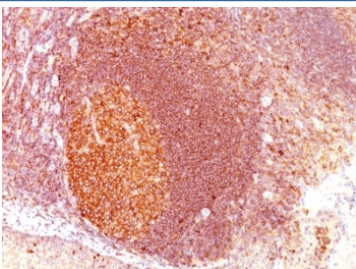


MALT1 Antibody [clone SPM578] (V9006)

Catalog No.	Formulation	Size
V9006-100UG	0.2 mg/ml in 1X PBS with 0.1 mg/ml BSA (US sourced) and 0.05% sodium azide	100 ug
V9006-20UG	0.2 mg/ml in 1X PBS with 0.1 mg/ml BSA (US sourced) and 0.05% sodium azide	20 ug
V9006SAF-100UG	1 mg/ml in 1X PBS; BSA free, sodium azide free	100 ug
V9006IHC-7ML	Prediluted in 1X PBS with 0.1 mg/ml BSA (US sourced) and 0.05% sodium azide; *For IHC use only*	7 ml

Bulk quote request

Availability	1-3 business days
Species Reactivity	Human
Format	Purified
Clonality	Monoclonal (mouse origin)
Isotype	Mouse IgG1, kappa
Clone Name	SPM578
Purity	Protein G affinity chromatography
UniProt	Q9UDY8
Localization	Cytoplasmic
Applications	Immunohistochemistry (FFPE) : 1-2ug/ml for 30 min at RT
Limitations	This MALT1 antibody is available for research use only.



IHC: Formalin-fixed, paraffin-embedded human tonsil stained with MALT1 antibody (clone SPM578).

Description

Mucosa associated lymphoid tissue lymphoma translocation gene 1 (MALT-1) is found in extranodal low-grade B cell lymphomas. The gene encodes two Ig-like C2-type domains and fuses with an API2 gene, which is highly expressed in adult lymphoid tissue. The translocation of this MALT-1 gene and the apoptosis-inhibiting API2 gene results in an increased development of MALT lymphomas and apoptosis inhibition. Sites at which this API2-MALT1 (11;18)(q21;q21) translocation commonly occurs are within human lung and kidney tissue. MALT lymphoma expresses nuclear Bcl10, which mediates the oligomerization and activation of a MALT-1 caspase-like domain. MALT-1 mRNA is found in pre-B cells, mature B cells and plasma cells.

Application Notes

The optimal dilution of the MALT1 antibody for each application should be determined by the researcher.

1. Staining of formalin-fixed tissues requires boiling tissue sections in pH 9 10mM Tris with 1mM EDTA for 10-20 min followed by cooling at RT for 20 minutes.
2. The prediluted format is supplied in a dropper bottle and is optimized for use in IHC. After epitope retrieval step (if required), drip mAb solution onto the tissue section and incubate at RT for 30 min.

Immunogen

Amino acids 701-808 from the human protein were used as the immunogen for this MALT1 antibody.

Storage

Store the MALT1 antibody at 2-8oC (with azide) or aliquot and store at -20oC or colder (without azide).