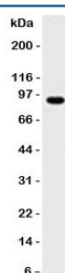


## MALT1 Antibody [clone 4NMT-3] (V7092)

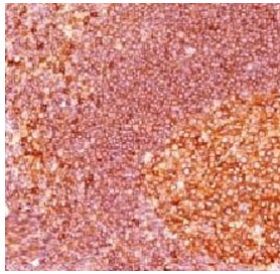
Catalog No.	Formulation	Size
V7092-100UG	0.2 mg/ml in 1X PBS with 0.1 mg/ml BSA (US sourced) and 0.05% sodium azide	100 ug
V7092-20UG	0.2 mg/ml in 1X PBS with 0.1 mg/ml BSA (US sourced) and 0.05% sodium azide	20 ug
V7092SAF-100UG	1 mg/ml in 1X PBS; BSA free, sodium azide free	100 ug
V7092IHC-7ML	Prediluted in 1X PBS with 0.1 mg/ml BSA (US sourced) and 0.05% sodium azide; *For IHC use only*	7 ml

[Bulk quote request](#)

<b>Species Reactivity</b>	Human
<b>Format</b>	Purified
<b>Clonality</b>	Monoclonal (mouse origin)
<b>Isotype</b>	Mouse IgG1, kappa
<b>Clone Name</b>	4NMT-3
<b>Purity</b>	Protein G purified
<b>Buffer</b>	1X PBS, pH 7.4
<b>Gene ID</b>	10892
<b>Localization</b>	Cytoplasmic
<b>Applications</b>	Western Blot : 1-2ug/ml Immunohistochemistry (FFPE) : 1-2ug/ml for 30 min at RT Prediluted IHC Only Format : incubate for 30 min at RT (1)
<b>Limitations</b>	This MALT1 antibody is available for research use only.



Western blot testing of human Daudi lysate with MALT1 antibody (clone 4NMT-3).  
Expected molecular weight ~92 kDa.



IHC staining of FFPE human tonsil tissue with MALT1 antibody (clone 4NMT-3).  
Required HIER: boil tissue sections in pH 9 10mM Tris with 1mM EDTA for 10-20 min.

## Description

Mucosa associated lymphoid tissue lymphoma translocation gene 1 is found in extranodal low-grade B cell lymphomas. It encodes two Ig-like C2-type domains and fuses with an API2 gene, which is highly expressed in adult lymphoid tissue. The translocation of the MALT1 gene, which maps to human chromosome 18q21, and the apoptosis-inhibiting API2 gene results in an increased development of MALT lymphomas and apoptosis inhibition.

## Application Notes

Titration of the MALT1 antibody may be required for optimal performance.

1. The prediluted format is supplied in a dropper bottle and is optimized for use in IHC. After epitope retrieval step (if required), drip mAb solution onto the tissue section and incubate at RT for 30 min.

## Immunogen

A recombinant fragment (aa 701-808) was used as the immunogen for this antibody.

## Storage

Store the MALT1 antibody at 2-8°C (with azide) or aliquot and store at -20°C or colder (without azide).