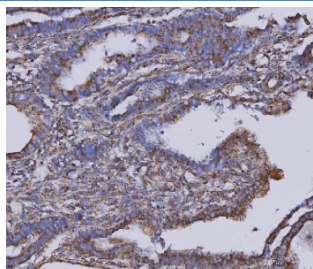


## Malate dehydrogenase 2 Antibody / MDH2 [clone 5D8C1] (RQ7336)

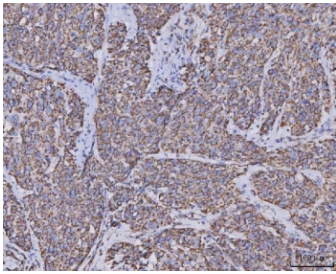
Catalog No.	Formulation	Size
RQ7336	0.5mg/ml if reconstituted with 0.2ml sterile DI water	100 ug

**Bulk quote request**

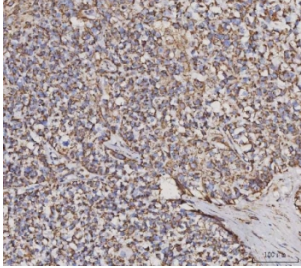
<b>Availability</b>	1-3 business days
<b>Species Reactivity</b>	Human
<b>Format</b>	Antigen affinity purified
<b>Clonality</b>	Monoclonal (mouse origin)
<b>Isotype</b>	Mouse IgG2b
<b>Clone Name</b>	5D8C1
<b>Purity</b>	Antigen affinity purified
<b>Buffer</b>	Lyophilized from 1X PBS with 2% Trehalose
<b>UniProt</b>	P40926
<b>Localization</b>	Cytoplasmic (mitochondria)
<b>Applications</b>	Western Blot : 0.5-1ug/ml Immunohistochemistry (FFPE) : 2-5ug/ml Immunofluorescence : 5ug/ml
<b>Limitations</b>	This Malate dehydrogenase 2 antibody is available for research use only.



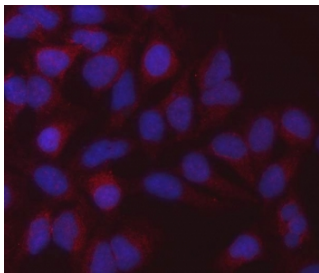
IHC staining of FFPE human cervical cancer tissue with Malate dehydrogenase 2 antibody. HIER: boil tissue sections in pH8 EDTA for 20 min and allow to cool before testing.



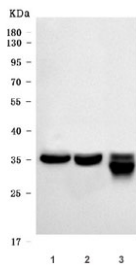
IHC staining of FFPE human squamous cell carcinoma tissue with Malate dehydrogenase 2 antibody. HIER: boil tissue sections in pH8 EDTA for 20 min and allow to cool before testing.



IHC staining of FFPE human breast cancer tissue with Malate dehydrogenase 2 antibody. HIER: boil tissue sections in pH8 EDTA for 20 min and allow to cool before testing.



Immunofluorescent staining of FFPE human HeLa cells with Malate dehydrogenase 2 antibody (red) and DAPI nuclear stain (blue). HIER: steam section in pH6 citrate buffer for 20 min.



Western blot testing of human 1) HeLa, 2) U-87 MG and 3) A431 cell lysate with Malate dehydrogenase 2 antibody. Predicted molecular weight ~35 kDa.

## Description

Malate dehydrogenase, mitochondrial, also known as malate dehydrogenase 2, is an enzyme that in humans is encoded by the MDH2 gene. Malate dehydrogenase catalyzes the reversible oxidation of malate to oxaloacetate, utilizing the NAD/NADH cofactor system in the citric acid cycle. The protein encoded by this gene is localized to the mitochondria and may play pivotal roles in the malate-aspartate shuttle that operates in the metabolic coordination between cytosol and mitochondria. Several transcript variants encoding different isoforms have been found for this gene.

## Application Notes

Optimal dilution of the Malate dehydrogenase 2 antibody should be determined by the researcher.

## Immunogen

Recombinant human protein (amino acids A9-L223) was used as the immunogen for the Malate dehydrogenase 2 antibody.

## Storage

After reconstitution, the Malate dehydrogenase 2 antibody can be stored for up to one month at 4°C. For long-term, aliquot and store at -20°C. Avoid repeated freezing and thawing.

