

Major Vault Protein Antibody [clone 1032] (V3043)

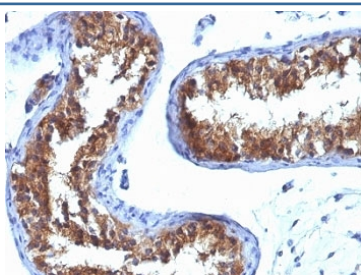
Catalog No.	Formulation	Size
V3043-100UG	0.2 mg/ml in 1X PBS with 0.1 mg/ml BSA (US sourced) and 0.05% sodium azide	100 ug
V3043-20UG	0.2 mg/ml in 1X PBS with 0.1 mg/ml BSA (US sourced) and 0.05% sodium azide	20 ug
V3043SAF-100UG	1 mg/ml in 1X PBS; BSA free, sodium azide free	100 ug
V3043IHC-7ML	Prediluted in 1X PBS with 0.1 mg/ml BSA (US sourced) and 0.05% sodium azide; *For IHC use only*	7 ml



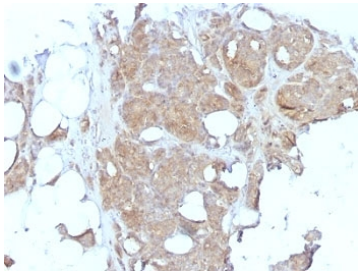
Citations (2)

[Bulk quote request](#)

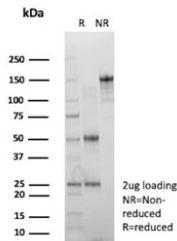
Availability	1-3 business days
Species Reactivity	Human
Format	Purified
Clonality	Monoclonal (mouse origin)
Isotype	Mouse IgG1, kappa
Clone Name	1032
Purity	Protein G affinity chromatography
UniProt	Q14764
Localization	Cytoplasmic, nuclear
Applications	Immunohistochemistry (FFPE) : 1-2ug/ml for 30 min at RT
Limitations	This Major Vault Protein antibody is available for research use only.



IHC analysis of formalin-fixed, paraffin-embedded human testicular carcinoma stained with Major Vault Protein antibody (clone 1032).



IHC analysis of formalin-fixed, paraffin-embedded human breast carcinoma stained with Major Vault Protein antibody (clone 1032).



SDS-PAGE analysis of purified, BSA-free Major Vault Protein antibody (clone 1032) as confirmation of integrity and purity.

Description

MVP is required for normal vault structure. Vaults are multi-subunit structures that may act as scaffolds for proteins involved in signal transduction. Vaults may also play a role in nucleo-cytoplasmic transport. Down-regulates INFG-mediated STAT1 signaling and subsequent activation of JAK. Down-regulates SRC activity and signaling through MAP kinases.

Application Notes

Optimal dilution of the Major Vault Protein antibody should be determined by the researcher.

1. Staining of formalin-fixed tissues requires boiling tissue sections in 10mM Tris with 1mM EDTA, pH 9, for 10-20 min followed by cooling at RT for 20 min.
2. The prediluted format is supplied in a dropper bottle and is optimized for use in IHC. After epitope retrieval step (if required), drip mAb solution onto the tissue section and incubate at RT for 30 min.

Immunogen

Proteins precipitated from human breast cancer MCF-7 cells were used as the immunogen for the Major Vault Protein antibody.

Storage

Store the Major Vault Protein antibody at 2-8°C (with azide) or aliquot and store at -20°C or colder (without azide).