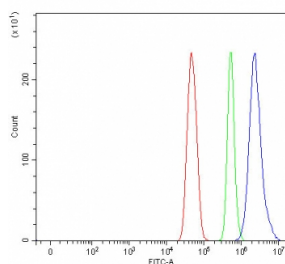


MAEL Antibody / Maelstrom homolog (RQ8389)

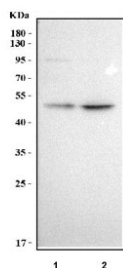
Catalog No.	Formulation	Size
RQ8389	0.5mg/ml if reconstituted with 0.2ml sterile DI water	100 ug

Bulk quote request

Availability	1-3 business days
Species Reactivity	Human
Format	Antigen affinity purified
Clonality	Polyclonal (rabbit origin)
Isotype	Rabbit IgG
Purity	Antigen affinity purified
Buffer	Lyophilized from 1X PBS with 2% Trehalose
UniProt	Q96JY0
Applications	Western Blot : 0.5-1ug/ml Flow Cytometry : 1-3ug/million cells Direct ELISA : 0.1-0.5ug/ml
Limitations	This MAEL antibody is available for research use only.



Flow cytometry testing of fixed and permeabilized human U-251 cells with MAEL antibody at 1ug/million cells (blocked with goat sera); Red=cells alone, Green=isotype control, Blue= MAEL antibody.



Western blot testing of human 1) K562 and 2) U-251 cell lysate with MAEL antibody. Predicted molecular weight ~49 kDa.

Description

The mammalian homolog of the *Drosophila* protein Maelstrom is expressed in the male germline and localizes to the sex body in spermatocytes and the chromatoid body in round spermatids. Similar to its expression in *Drosophila*, Maelstrom is a component of nuages, a germ-cell specific organelle and is thought to be essential for spermatogenesis and transposon repression during meiosis. In humans, Maelstrom has been found to be expressed only in the testis and in various cancer cell lines. Treatment of these cell lines with the demethylating agent 5'-Aza-2-Deoxycytidine significantly upregulated Maelstrom levels, indicating that its expression is regulated by DNA methylation.

Application Notes

Optimal dilution of the MAEL antibody should be determined by the researcher.

Immunogen

An E.coli-derived human recombinant protein (E73-Q347) was used as the immunogen for the MAEL antibody.

Storage

After reconstitution, the MAEL antibody can be stored for up to one month at 4°C. For long-term, aliquot and store at -20°C. Avoid repeated freezing and thawing.