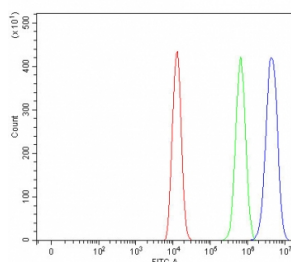


MAD2L1BP Antibody / CMT2 (RQ8347)

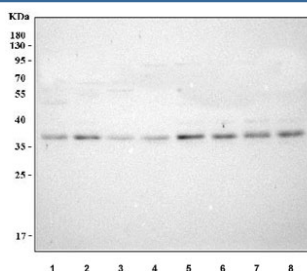
Catalog No.	Formulation	Size
RQ8347	0.5mg/ml if reconstituted with 0.2ml sterile DI water	100 ug

Bulk quote request

Availability	1-3 business days
Species Reactivity	Human
Format	Antigen affinity purified
Clonality	Polyclonal (rabbit origin)
Isotype	Rabbit IgG
Purity	Antigen affinity purified
Buffer	Lyophilized from 1X PBS with 2% Trehalose
UniProt	Q15013
Applications	Western Blot : 0.5-1ug/ml Flow Cytometry : 1-3ug/million cells Direct ELISA : 0.1-0.5ug/ml
Limitations	This MAD2L1BP antibody is available for research use only.



Flow cytometry testing of fixed and permeabilized human HEL cells with MAD2L1BP antibody at 1ug/million cells (blocked with goat sera); Red=cells alone, Green=isotype control, Blue= MAD2L1BP antibody.



Western blot testing of human 1) A431, 2) K562, 3) HeLa, 4) ThP-1, 5) HepG2, 6) HEL, 7) 293T and 8) SH-SY5Y cell lysate with MAD2L1BP antibody. Predicted molecular weight: 31-35 kDa (two isoforms).

Description

MAD2L1-binding protein is a protein that in humans is encoded by the MAD2L1BP gene. The protein encoded by this gene was identified as a binding protein of the MAD2 mitotic arrest deficient-like 1 (MAD2/MAD2L1). MAD2 is a key component of the spindle checkpoint that delays the onset of anaphase until all the kinetochores are attached to the spindle. This protein may interact with the spindle checkpoint and coordinate cell cycle events in late mitosis. Alternatively spliced transcript variants encoding distinct isoforms have been observed.

Application Notes

Optimal dilution of the MAD2L1BP antibody should be determined by the researcher.

Immunogen

An E.coli-derived human recombinant protein (Y20-E274) was used as the immunogen for the MAD2L1BP antibody.

Storage

After reconstitution, the MAD2L1BP antibody can be stored for up to one month at 4oC. For long-term, aliquot and store at -20oC. Avoid repeated freezing and thawing.