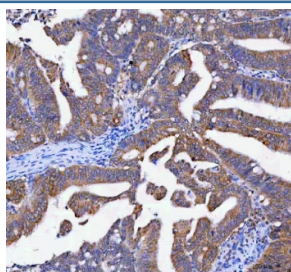


## Lysophospholipase 1 Antibody / LYPLA1 / LPL-I (RQ8475)

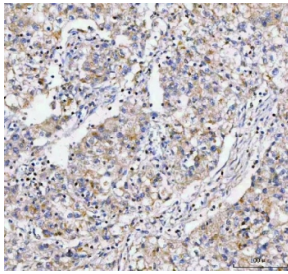
Catalog No.	Formulation	Size
RQ8475	0.5mg/ml if reconstituted with 0.2ml sterile DI water	100 ug

**Bulk quote request**

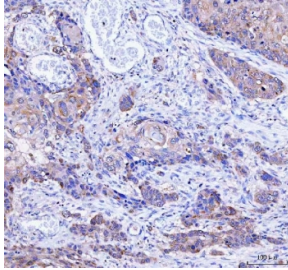
<b>Availability</b>	1-3 days
<b>Species Reactivity</b>	Human, Mouse, Rat
<b>Format</b>	Antigen affinity purified
<b>Clonality</b>	Polyclonal (rabbit origin)
<b>Isotype</b>	Rabbit IgG
<b>Purity</b>	Antigen affinity purified
<b>Buffer</b>	Lyophilized from 1X PBS with 2% Trehalose
<b>UniProt</b>	O75608
<b>Localization</b>	Cytoplasm, cell membrane, nuclear membrane
<b>Applications</b>	Western Blot : 0.5-1ug/ml Immunohistochemistry (FFPE) : 2-5ug/ml Flow Cytometry : 1-3ug/million cells ELISA : 0.1-0.5ug/ml
<b>Limitations</b>	This Lysophospholipase 1 antibody is available for research use only.



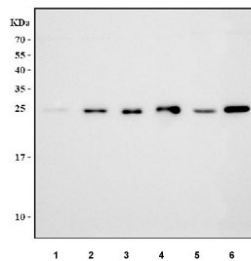
IHC staining of FFPE human rectum adenocarcinoma tissue with Lysophospholipase 1 antibody. HIER: boil tissue sections in pH8 EDTA for 20 min and allow to cool before testing.



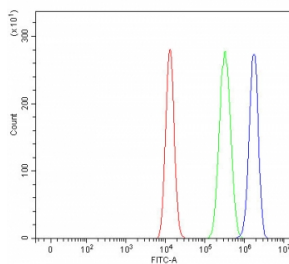
IHC staining of FFPE human lung cancer tissue with Lysophospholipase 1 antibody. HIER: boil tissue sections in pH8 EDTA for 20 min and allow to cool before testing.



IHC staining of FFPE human esophageal squamous carcinoma tissue with Lysophospholipase 1 antibody. HIER: boil tissue sections in pH8 EDTA for 20 min and allow to cool before testing.



Western blot testing of 1) human HeLa, 2) human K562, 3) human HEL, 4) human RT4, 5) rat liver and 6) mouse liver tissue lysate with Lysophospholipase 1 antibody. Predicted molecular weight ~25 kDa.



Flow cytometry testing of fixed and permeabilized human HEL cells with Lysophospholipase 1 antibody at 1ug/million cells (blocked with goat sera); Red=cells alone, Green=isotype control, Blue= Lysophospholipase 1 antibody.

## Description

Acyl-protein thioesterase 1 is an enzyme that in humans is encoded by the LYPLA1 gene. This gene encodes a member of the alpha/beta hydrolase superfamily. The encoded protein functions as a homodimer, exhibiting both depalmitoylating as well as lysophospholipase activity, and may be involved in Ras localization and signaling. Alternate splicing results in multiple transcript variants. Pseudogenes of this gene have been defined on chromosomes 4, 6, and 7.

## Application Notes

Optimal dilution of the Lysophospholipase 1 antibody should be determined by the researcher.

## Immunogen

An E.coli-derived human recombinant protein (amino acids H35-D230) was used as the immunogen for the Lysophospholipase 1 antibody.

## Storage

After reconstitution, the Lysophospholipase 1 antibody can be stored for up to one month at 4oC. For long-term, aliquot and store at -20oC. Avoid repeated freezing and thawing.

