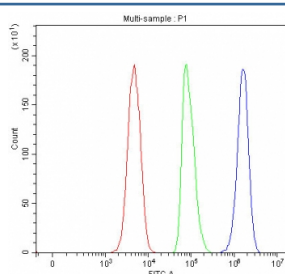


## LYPD6 Antibody / Ly6/PLAUR domain-containing protein 6 (RQ8566)

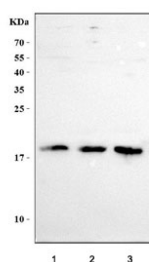
Catalog No.	Formulation	Size
RQ8566	0.5mg/ml if reconstituted with 0.2ml sterile DI water	100 ug

**Bulk quote request**

<b>Availability</b>	1-3 days
<b>Species Reactivity</b>	Human
<b>Format</b>	Antigen affinity purified
<b>Clonality</b>	Polyclonal (rabbit origin)
<b>Isotype</b>	Rabbit IgG
<b>Purity</b>	Antigen affinity purified
<b>Buffer</b>	Lyophilized from 1X PBS with 2% Trehalose
<b>UniProt</b>	Q86Y78
<b>Applications</b>	Western Blot : 0.5-1ug/ml Flow Cytometry : 1-3ug/million cells ELISA : 0.1-0.5ug/ml
<b>Limitations</b>	This LYPD6 antibody is available for research use only.



Flow cytometry testing of fixed and permeabilized human SH-SY5Y cells with LYPD6 antibody at 1ug/million cells (blocked with goat sera); Red=cells alone, Green=isotype control, Blue= LYPD6 antibody.



Western blot testing of human 1) RT4, 2) MCF7 and 3) SiHa cell lysate with LYPD6 antibody. Predicted molecular weight ~19 kDa.

## Description

Members of the LY6 protein family such as LYPD6 have at least one 80-amino acid LU domain that contains 10 conserved cysteines with a defined disulfide-bonding pattern (Zhang et al., 2010 [PubMed 19653121]).

## Application Notes

Optimal dilution of the LYPD6 antibody should be determined by the researcher.

## Immunogen

An E.coli-derived human recombinant protein (amino acids A23-C155) was used as the immunogen for the LYPD6 antibody.

## Storage

After reconstitution, the LYPD6 antibody can be stored for up to one month at 4oC. For long-term, aliquot and store at -20oC. Avoid repeated freezing and thawing.