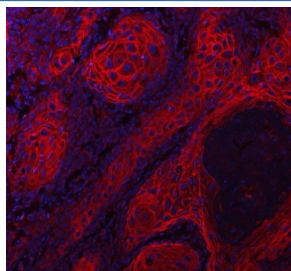


LYPD3 Antibody / Ly6/PLAUR domain-containing protein 3 (RQ8480)

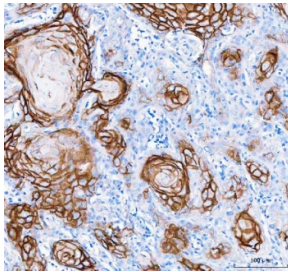
Catalog No.	Formulation	Size
RQ8480	0.5mg/ml if reconstituted with 0.2ml sterile DI water	100 ug

Bulk quote request

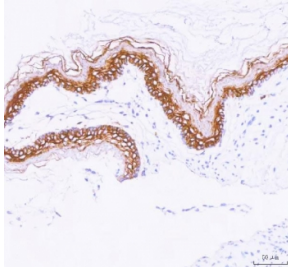
Availability	1-3 days
Species Reactivity	Human, Mouse, Rat
Format	Antigen affinity purified
Clonality	Polyclonal (rabbit origin)
Isotype	Rabbit IgG
Purity	Antigen affinity purified
Buffer	Lyophilized from 1X PBS with 2% Trehalose
UniProt	O95274
Localization	Cell membrane
Applications	Western Blot : 0.5-1ug/ml Immunohistochemistry (FFPE) : 2-5ug/ml Flow Cytometry : 1-3ug/million cells Immunofluorescence : 5ug/ml ELISA : 0.1-0.5ug/ml
Limitations	This LYPD3 antibody is available for research use only.



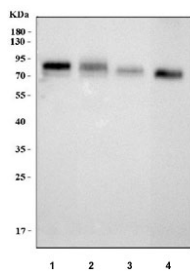
Immunofluorescent staining of FFPE human skin cancer tissue with LYPD3 antibody (red) and DAPI nuclear stain (blue). HIER: steam section in pH8 EDTA buffer for 20 min.



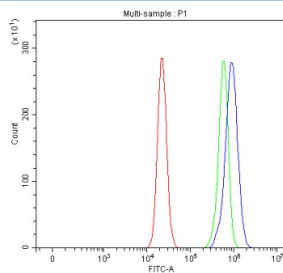
IHC staining of FFPE human skin cancer tissue with LYPD3 antibody. HIER: boil tissue sections in pH8 EDTA for 20 min and allow to cool before testing.



IHC staining of FFPE rat stomach tissue with LYPD3 antibody. HIER: boil tissue sections in pH8 EDTA for 20 min and allow to cool before testing.



Western blot testing of 1) human RT4, 2) human A431, 3) rat stomach and 4) mouse stomach tissue lysate with LYPD3 antibody. Predicted molecular weight ~36 kDa but may be observed at higher molecular weights due to glycosylation.



Flow cytometry testing of fixed and permeabilized human RT4 cells with LYPD3 antibody at 1ug/million cells (blocked with goat sera); Red=cells alone, Green=isotype control, Blue= LYPD3 antibody.

Description

Ly6/PLAUR domain-containing protein 3 is a protein that in humans is encoded by the LYPD3 gene. Ly6 / PLAUR domain-containing protein 3, also known as GPI-anchored metastasis-associated protein C4.4A homolog, Matrigel-induced gene C4 protein, MIG-C4, and LYPD3, is a cell membrane protein that contains two UPAR/Ly6 domains. Human LYPD3 contains two UPAR/Ly6 domains. LYPD3 is expressed in the placenta, skin, and urothelium. It is found in suprabasal keratinocytes of chronic wounds. Weak expression of LYPD3 is found in the esophagus and peripheral blood mononuclear cells. It is found in the majority of primary and metastatic transitional cell carcinomas (TCCs) and as well in breast cancer tissues, but not in adjacent normal tissues. High expression of LYPD3 is found in the tumor component of some noninvasive superficial lesions and invasive and metastatic urothelial cancers. LYPD3 is up-regulated in migrating keratinocytes during epithelisation of incisional skin wounds. LYPD3 supports cell migration. It may be involved in urothelial cell-matrix interactions. It may also be involved in tumor progression.

Application Notes

Optimal dilution of the LYPD3 antibody should be determined by the researcher.

Immunogen

An E.coli-derived human recombinant protein (amino acids L31-E245) was used as the immunogen for the LYPD3 antibody.

Storage

After reconstitution, the LYPD3 antibody can be stored for up to one month at 4°C. For long-term, aliquot and store at -20°C. Avoid repeated freezing and thawing.