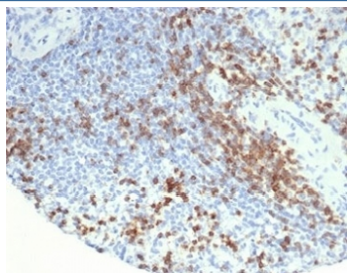


## Lymphocyte Function Antigen 2 Antibody / LFA-2 / CD2 [clone LFA2/7104] (V4045)

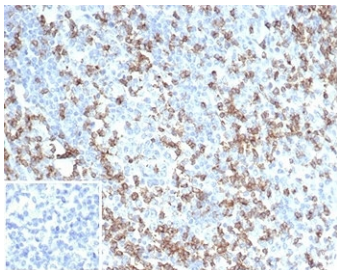
Catalog No.	Formulation	Size
V4045-100UG	0.2 mg/ml in 1X PBS with 0.1 mg/ml BSA (US sourced), 0.05% sodium azide	100 ug
V4045-20UG	0.2 mg/ml in 1X PBS with 0.1 mg/ml BSA (US sourced), 0.05% sodium azide	20 ug
V4045SAF-100UG	1 mg/ml in 1X PBS; BSA free, sodium azide free	100 ug

### Bulk quote request

Availability	1-3 business days
Species Reactivity	Human
Format	Purified
Clonality	Monoclonal (mouse origin)
Isotype	Mouse IgG2b, kappa
Clone Name	LFA2/7104
Purity	Protein A/G affinity
UniProt	P06729
Localization	Cell surface
Applications	Immunohistochemistry (FFPE) : 1-2ug/ml
Limitations	This Lymphocyte Function Antigen 2 antibody is available for research use only.

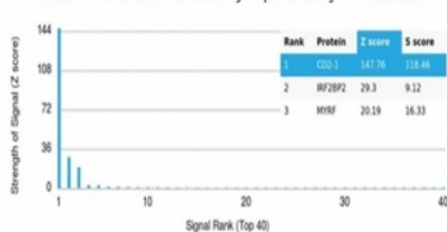


IHC staining of FFPE human spleen tissue with CD2 antibody (clone LFA2/7104). HIER: boil tissue sections in pH 9 10mM Tris with 1mM EDTA for 20 min and allow to cool before testing.



IHC staining of FFPE human tonsil tissue with CD2 antibody (clone LFA2/7104)  
 Negative control inset: PBS used instead of primary antibody to control for secondary Ab binding. HIER: boil tissue sections in pH 9 10mM Tris with 1mM EDTA for 20 min and allow to cool before testing.

Human Protein Microarray Specificity Validation



Analysis of HuProt(TM) microarray containing more than 19,000 full-length human proteins using Lymphocyte Function Antigen 2 antibody (clone LFA2/7104). These results demonstrate the foremost specificity of the LFA2/7104 mAb. Z- and S- score: The Z-score represents the strength of a signal that an antibody (in combination with a fluorescently-tagged anti-IgG secondary Ab) produces when binding to a particular protein on the HuProt(TM) array. Z-scores are described in units of standard deviations (SD&#39;s) above the mean value of all signals generated on that array. If the targets on the HuProt(TM) are arranged in descending order of the Z-score, the S-score is the difference (also in units of SD&#39;s) between the Z-scores. The S-score therefore represents the relative target specificity of an Ab to its intended target.

## Description

CD2 is mainly present on the surface of mature T cells and NK cell membranes, while B cells are usually not expressed. It can be used to label the diagnosis and study of normal T cells and their associated tumors, such as pre-t cell lymphoma, marginal T cell lymphoma and anaplastic cell lymphoma. CD2 antibody is useful for identification of precursor and mature T-cell lymphomas. Aberrant loss of CD2 in T-cell lymphomas may help to distinguish them from reactive T-cell proliferations.

## Application Notes

Optimal dilution of the Lymphocyte Function Antigen 2 antibody should be determined by the researcher.

## Immunogen

A recombinant fragment from the human CD2 protein was used as the immunogen for the Lymphocyte Function Antigen 2 antibody.

## Storage

Aliquot the Lymphocyte Function Antigen 2 antibody and store frozen at -20oC or colder. Avoid repeated freeze-thaw cycles.