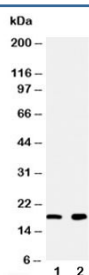


Ly6AL Antibody (R30390)

Catalog No.	Formulation	Size
R30390	0.5mg/ml if reconstituted with 0.2ml sterile DI water	100 ug

Bulk quote request

Availability	1-3 business days
Species Reactivity	Rat
Format	Antigen affinity purified
Clonality	Polyclonal (rabbit origin)
Isotype	Rabbit IgG
Purity	Antigen affinity
Buffer	Lyophilized from 1X PBS with 2.5% BSA and 0.025% sodium azide/thimerosal
UniProt	D3ZPQ1
Gene ID	362935
Applications	Western Blot : 0.5-1ug/ml
Limitations	This Ly6AL antibody is available for research use only.



Western blot testing of Ly6AL antibody and Lane 1: rat heart; 2: rat liver tissue lysate. Predicted molecular weight ~16 kDa.

Description

Ly6AL, lymphocyte antigen 6 complex, locus A-like, is also known as Ly6a, Ly6a_predicted.

Application Notes

The stated application concentrations are suggested starting amounts. Titration of the Ly6AL antibody may be required due to differences in protocols and secondary/substrate sensitivity.

Immunogen

Amino acids TVVQVNTSCCTRDLNAA (rat) were used as the immunogen for this Ly6AL antibody.

Storage

After reconstitution, the Ly6AL antibody can be stored for up to one month at 4°C. For long-term, aliquot and store at -20°C. Avoid repeated freezing and thawing.