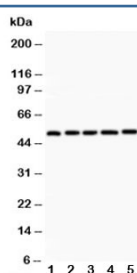


## LXR alpha Antibody (NR1H3) (R30351)

| Catalog No. | Formulation   | Size   |
|-------------|---|--------|
| R30351      | 0.5mg/ml if reconstituted with 0.2ml sterile DI water | 100 ug |

[Bulk quote request](#)

|                    |  |
|--------------------|--|
| Availability       | 1-3 business days  |
| Species Reactivity | Human, Mouse, Rat  |
| Format             | Antigen affinity purified  |
| Clonality          | Polyclonal (rabbit origin)   |
| Isotype            | Rabbit IgG   |
| Purity             | Antigen affinity   |
| Buffer             | Lyophilized from 1X PBS with 2.5% BSA and 0.025% sodium azide/thimerosal |
| UniProt            | Q13133   |
| Applications       | Western Blot : 0.5-1ug/ml  |
| Limitations        | This LXR alpha antibody is available for research use only.              |



Western blot testing of LXR alpha antibody and Lane 1: rat liver; 2: rat lung; 3: rat spleen; 4: rat kidney; 5: human placenta; Predicted size: 51KD; Observed size: 51KD

## Description

Liver X receptor alpha, also called NR1H3, is a tissue-specific cofactor that permits RXRA to function as a potent 9cRA receptor with a distinct target gene specificity. It specifically interacts with RXRA in vivo to form a functional heterodimer in which RXRA is the ligand-binding subunit. Additionally, Liver X receptor activity is critical for physiologic lipid metabolism and transport. They are endogenous inhibitors of atherogenesis and are targets for therapeutic intervention in cardiovascular disease. Furthermore, they and their ligands are negative regulators of macrophage inflammatory gene expression. Liver X receptors act as a transcriptional switch that integrates hepatic glucose metabolism and fatty acid synthesis. The LXR-IDOL-LDLR axis defines a complementary pathway to sterol response element-binding proteins for sterol regulation of cholesterol uptake.

## Application Notes

The stated application concentrations are suggested starting amounts. Titration of the LXR alpha antibody may be required due to differences in protocols and secondary/substrate sensitivity.

## Immunogen

An amino acid sequence from the C-terminus of human LXR alpha (NVQDQLQVERLQHTY) was used as the immunogen for this LXR alpha antibody (100% homologous in human, mouse and rat).

## Storage

After reconstitution, the LXR alpha antibody can be stored for up to one month at 4°C. For long-term, aliquot and store at -20°C. Avoid repeated freezing and thawing.