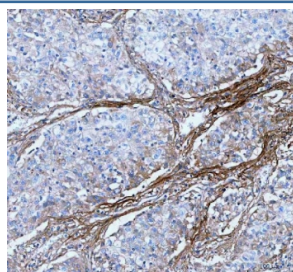


Lumican Antibody / LUM (RQ8519)

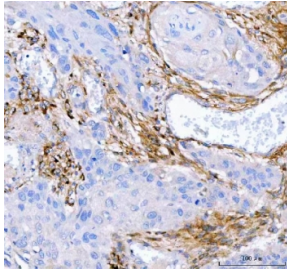
Catalog No.	Formulation	Size
RQ8519	0.5mg/ml if reconstituted with 0.2ml sterile DI water	100 ug

Bulk quote request

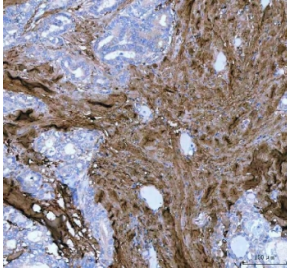
Availability	1-3 days
Species Reactivity	Human, Mouse, Rat
Format	Antigen affinity purified
Clonality	Polyclonal (rabbit origin)
Isotype	Rabbit IgG
Purity	Antigen affinity purified
Buffer	Lyophilized from 1X PBS with 2% Trehalose
UniProt	P51884
Localization	Cytoplasmic, secreted
Applications	Western Blot : 0.5-1ug/ml Immunohistochemistry (FFPE) : 2-5ug/ml Flow Cytometry : 1-3ug/million cells ELISA : 0.1-0.5ug/ml
Limitations	This Lumican antibody is available for research use only.



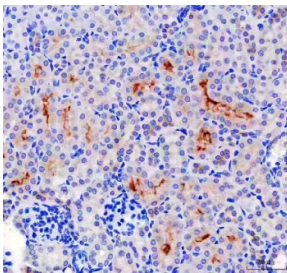
IHC staining of FFPE human lung cancer tissue with Lumican antibody. HIER: boil tissue sections in pH8 EDTA for 20 min and allow to cool before testing.



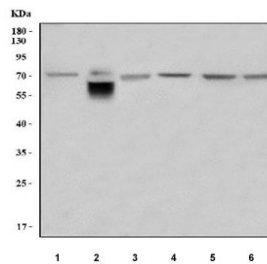
IHC staining of FFPE human esophageal squamous carcinoma tissue with Lumican antibody. HIER: boil tissue sections in pH8 EDTA for 20 min and allow to cool before testing.



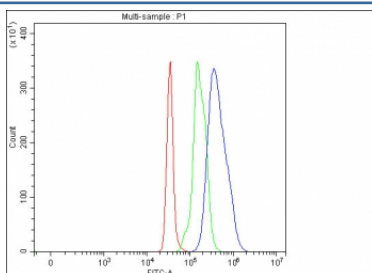
IHC staining of FFPE human thyroid papillary carcinoma tissue with Lumican antibody. HIER: boil tissue sections in pH8 EDTA for 20 min and allow to cool before testing.



IHC staining of FFPE human mouse kidney tissue with Lumican antibody. HIER: boil tissue sections in pH8 EDTA for 20 min and allow to cool before testing.



Western blot testing of 1) human Jurkat, 2) human placenta, 3) human Caco-2, 4) rat liver, 5) mouse liver and 6) mouse NIH 3T3 cell lysate with Lumican antibody. Predicted molecular weight ~38 kDa but may be observed at higher molecular weights due to glycosylation.



Flow cytometry testing of fixed and permeabilized human SH-SY5Y cells with Lumican antibody at 1ug/million cells (blocked with goat sera); Red=cells alone, Green=isotype control, Blue= Lumican antibody.

Description

Lumican, also known as LUM, is an extracellular matrix protein that, in humans, is encoded by the LUM gene on chromosome 12. This gene encodes a member of the small leucine-rich proteoglycan (SLRP) family that includes decorin, biglycan, fibromodulin, keratocan, epiphykan, and osteoglycin. In these bifunctional molecules, the protein moiety binds collagen fibrils and the highly charged hydrophilic glycosaminoglycans regulate interfibrillar spacings. Lumican is the major keratan sulfate proteoglycan of the cornea but is also distributed in interstitial collagenous matrices throughout the body. Lumican may regulate collagen fibril organization and circumferential growth, corneal transparency, and epithelial cell migration and tissue repair.

Application Notes

Optimal dilution of the Lumican antibody should be determined by the researcher.

Immunogen

An E.coli-derived human recombinant protein (amino acids Q19-N338) was used as the immunogen for the Lumican antibody.

Storage

After reconstitution, the Lumican antibody can be stored for up to one month at 4oC. For long-term, aliquot and store at -20oC. Avoid repeated freezing and thawing.