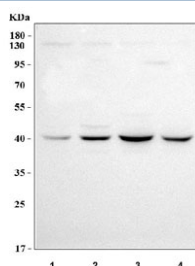


LUC7L Antibody / Luc7-like 1 (RQ8621)

Catalog No.	Formulation	Size
RQ8621	0.5mg/ml if reconstituted with 0.2ml sterile DI water	100 ug

Bulk quote request

Availability	1-3 days
Species Reactivity	Human
Format	Antigen affinity purified
Clonality	Polyclonal (rabbit origin)
Isotype	Rabbit IgG
Purity	Antigen affinity purified
Buffer	Lyophilized from 1X PBS with 2% Trehalose
UniProt	Q9NQ29
Applications	Western Blot : 0.5-1ug/ml ELISA : 0.1-0.5ug/ml
Limitations	This LUC7L antibody is available for research use only.



Western blot testing of human 1) A549, 2) 293T, 3) HepG2 and 4) Caco-2 cell lysate with LUC7L antibody. Predicted molecular weight ~44 kDa.

Description

Putative RNA-binding protein Luc7-like 1 is a protein that in humans is encoded by the LUC7L gene. The LUC7L gene may represent a mammalian heterochromatic gene, encoding a putative RNA-binding protein similar to the yeast Luc7p subunit of the U1 snRNP splicing complex that is normally required for 5-prime splice site selection.

Application Notes

Optimal dilution of the LUC7L antibody should be determined by the researcher.

Immunogen

An E.coli-derived human recombinant protein (amino acids R78-R362) was used as the immunogen for the LUC7L antibody.

Storage

After reconstitution, the LUC7L antibody can be stored for up to one month at 4°C. For long-term, aliquot and store at -20°C. Avoid repeated freezing and thawing.