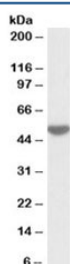


LSP1 Antibody (R35821)

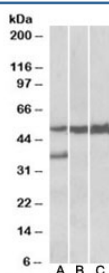
Catalog No.	Formulation	Size
R35821-100UG	0.5 mg/ml in 1X TBS, pH7.3, with 0.5% BSA (US sourced) and 0.02% sodium azide	100 ug

[Bulk quote request](#)

Availability	1-3 business days
Species Reactivity	Human, Mouse, Rat
Predicted Reactivity	Cow, Dog
Format	Antigen affinity purified
Clonality	Polyclonal (goat origin)
Isotype	Goat Ig
Purity	Antigen affinity
Gene ID	4046
Applications	Western Blot : 0.05-0.2ug/ml ELISA (peptide) LOD : 1:16000
Limitations	This LSP1 antibody is available for research use only.



Western blot testing of human peripheral lymphocyte lysate with LSP1 antibody at 0.05ug/ml. Predicted molecular weight: ~37kDa but is routinely observed at ~52kDa (PMID: 15684321).



Western blot of human liver lysate (lane 1), mouse liver lysate (lane 2) and rat liver lysate (lane 3) with LSP1 antibody at 0.05ug/ml. Predicted molecular weight: ~37kDa but is routinely observed at ~52kDa (PMID: 15684321).

Description

Additional name(s) for this target protein: Lymphocyte-specific protein 1

Application Notes

Optimal dilution of the LSP1 antibody should be determined by the researcher.

Immunogen

Amino acids RYKFVATGHGKYEKV were used as the immunogen for this LSP1 antibody.

Storage

Aliquot and store the LSP1 antibody at -20oC.