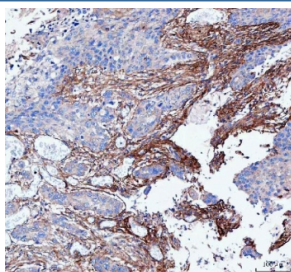


LSG1 Antibody / Large subunit GTPase 1 (RQ8610)

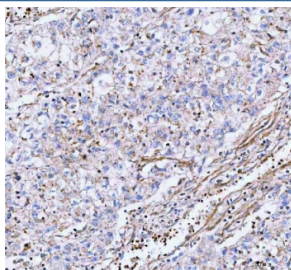
Catalog No.	Formulation	Size
RQ8610	0.5mg/ml if reconstituted with 0.2ml sterile DI water	100 ug

Bulk quote request

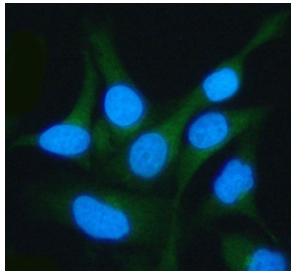
Availability	1-3 days
Species Reactivity	Human, Mouse, Rat
Format	Antigen affinity purified
Clonality	Polyclonal (rabbit origin)
Isotype	Rabbit IgG
Purity	Antigen affinity purified
Buffer	Lyophilized from 1X PBS with 2% Trehalose
UniProt	Q9H089
Applications	Western Blot : 0.5-1ug/ml Immunohistochemistry (FFPE) : 2-5ug/ml Immunofluorescence : 5ug/ml Flow Cytometry : 1-3ug/million cells ELISA : 0.1-0.5ug/ml
Limitations	This LSG1 antibody is available for research use only.



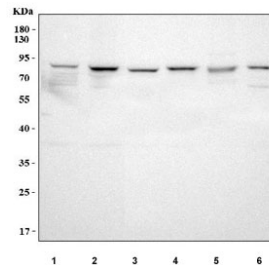
IHC staining of FFPE human esophageal squamous carcinoma tissue with LSG1 antibody. HIER: boil tissue sections in pH8 EDTA for 20 min and allow to cool before testing.



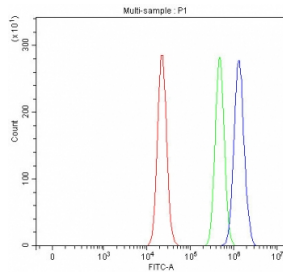
IHC staining of FFPE human lung cancer tissue with LSG1 antibody. HIER: boil tissue sections in pH8 EDTA for 20 min and allow to cool before testing.



Immunofluorescent staining of FFPE human HeLa cells with LSG1 antibody (green) and DAPI nuclear stain (blue). HIER: steam section in pH6 citrate buffer for 20 min.



Western blot testing of human 1) HeLa, 2) MCF7, 3) PC-3, 4) U-251, 5) RT4 and 6) HEL cell lysate with LSG1 antibody. Predicted molecular weight ~75 kDa.



Flow cytometry testing of fixed and permeabilized human RT4 cells with LSG1 antibody at 1ug/million cells (blocked with goat sera); Red=cells alone, Green=isotype control, Blue= LSG1 antibody.

Description

Large subunit GTPase 1 homolog is an enzyme that in humans is encoded by the LSG1 gene. This gene encodes a protein related to the yeast large subunit GTPase 1. The encoded protein is necessary for cell viability and may localize in the endoplasmic reticulum, nucleus and cytoplasm.

Application Notes

Optimal dilution of the LSG1 antibody should be determined by the researcher.

Immunogen

An E.coli-derived human recombinant protein (amino acids R47-H560) was used as the immunogen for the LSG1 antibody.

Storage

After reconstitution, the LSG1 antibody can be stored for up to one month at 4oC. For long-term, aliquot and store at -20oC. Avoid repeated freezing and thawing.

