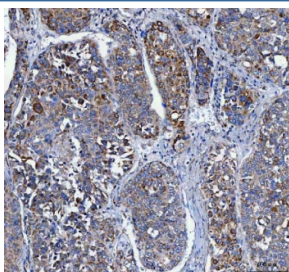


## LRRC75B Antibody / FAM211B (RQ8550)

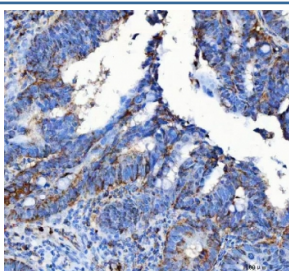
Catalog No.	Formulation	Size
RQ8550	0.5mg/ml if reconstituted with 0.2ml sterile DI water	100 ug

**Bulk quote request**

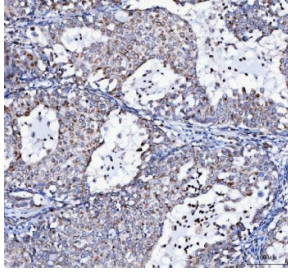
<b>Availability</b>	1-3 days
<b>Species Reactivity</b>	Human, Mouse, Rat
<b>Format</b>	Antigen affinity purified
<b>Clonality</b>	Polyclonal (rabbit origin)
<b>Isotype</b>	Rabbit IgG
<b>Purity</b>	Antigen affinity purified
<b>Buffer</b>	Lyophilized from 1X PBS with 2% Trehalose
<b>UniProt</b>	Q2VPJ9
<b>Applications</b>	Western Blot : 0.5-1ug/ml Immunohistochemistry (FFPE) : 2-5ug/ml Flow Cytometry : 1-3ug/million cells ELISA : 0.1-0.5ug/ml
<b>Limitations</b>	This LRRC75B antibody is available for research use only.



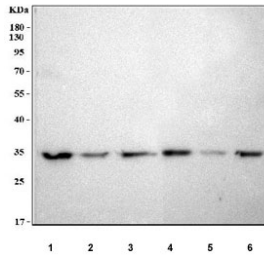
IHC staining of FFPE human liver cancer tissue with LRRC75B antibody. HIER: boil tissue sections in pH8 EDTA for 20 min and allow to cool before testing.



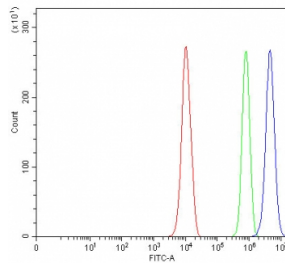
IHC staining of FFPE human colorectal adenocarcinoma tissue with LRRC75B antibody. HIER: boil tissue sections in pH8 EDTA for 20 min and allow to cool before testing.



IHC staining of FFPE human lung cancer tissue with LRRC75B antibody. HIER: boil tissue sections in pH8 EDTA for 20 min and allow to cool before testing.



Western blot testing of 1) human HepG2, 2) human SH-SY5Y, 3) human MCF7, 4) rat C6, 5) mouse brain and 6) mouse Neuro-2a cell lysate with LRRC75B antibody. Predicted molecular weight ~35 kDa.



Flow cytometry testing of fixed and permeabilized human PC-3 cells with LRRC75B antibody at 1ug/million cells (blocked with goat sera); Red=cells alone, Green=isotype control, Blue= LRRC75B antibody.

## Description

LRRC75B (Leucine-rich repeat-containing protein 75B), also called FAM211B (Family with sequence similarity 211, member B) is a leucine-rich repeat (LRR) protein present in viruses as well as eukaryotes. It is involved in diverse functions and is involved in protein-protein interactions. The LRR domains fold into a horseshoe (or arc) shape with a parallel beta-sheet on the concave face.

## Application Notes

Optimal dilution of the LRRC75B antibody should be determined by the researcher.

## Immunogen

An E.coli-derived human recombinant protein (amino acids Q59-E283) was used as the immunogen for the LRRC75B antibody.

## Storage

After reconstitution, the LRRC75B antibody can be stored for up to one month at 4oC. For long-term, aliquot and store at -20oC. Avoid repeated freezing and thawing.

