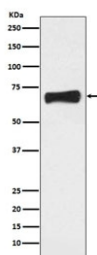


LRH1 Antibody / NR5A2 [clone ABHO-14] (RQ4695)

Catalog No.	Formulation	Size
RQ4695	Antibody in PBS with 0.02% sodium azide, 50% glycerol and 0.4-0.5mg/ml BSA	100 ul

[Bulk quote request](#)

Availability	1-2 weeks
Species Reactivity	Human
Format	Purified
Clonality	Rabbit Monoclonal
Isotype	Rabbit IgG
Clone Name	ABHO-14
Purity	Affinity purified
UniProt	O00482
Applications	Western Blot : 1:500-1:2000
Limitations	This LRH1 antibody is available for research use only.



Western blot testing of human MCF7 cell lysate with LRH1 antibody. Predicted molecular weight ~61 kDa.

Description

The protein encoded by this gene is a DNA-binding zinc finger transcription factor and is a member of the fushi tarazu factor-1 subfamily of orphan nuclear receptors. The encoded protein is involved in the expression of genes for hepatitis B virus and cholesterol biosynthesis, and may be an important regulator of embryonic development. [RefSeq]

Application Notes

Optimal dilution of the LRH1 antibody should be determined by the researcher.

Immunogen

A synthetic peptide specific to human NR5A2 / LRH1 was used as the immunogen for the LRH1 antibody.

Storage

Store the LRH1 antibody at -20oC.