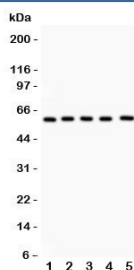


LRH-1 Antibody (R31711)

Catalog No.	Formulation	Size
R31711	0.5mg/ml if reconstituted with 0.2ml sterile DI water	100 ug

Bulk quote request

Availability	1-3 business days
Species Reactivity	Human
Format	Antigen affinity purified
Clonality	Polyclonal (rabbit origin)
Isotype	Rabbit IgG
Purity	Antigen affinity
Buffer	Lyophilized from 1X PBS with 2.5% BSA and 0.025% sodium azide
Gene ID	2494
Localization	Nuclear
Applications	Western Blot : 0.5-1ug/ml
Limitations	This LRH-1 antibody is available for research use only.



Western blot testing of LRH-1 antibody and Lane 1: PANC; 2: HEPG2; 3: A549; 4: SMMC-7721; 5: HeLa lysate. Predicted/observed molecular weight: ~60kDa.

Description

NR5A2 (nuclear receptor subfamily 5, group A, member 2) also known as liver receptor homolog-1 (LRH-1) is a protein that in humans is encoded by the NR5A2 gene. This protein is a member of the nuclear receptor family of intracellulartranscription factors. It plays a critical role in the regulation of development, cholesterol transport, bile acid homeostasis andsteroidogenesis. LRH-1 is important for maintaining pluripotence of stem cells during embryonic development. Liver receptor homolog-1 has been shown to interact with the small heterodimer partner.

Application Notes

The stated application concentrations are suggested starting amounts. Titration of the LRH-1 antibody may be required due to differences in protocols and secondary/substrate sensitivity.

Immunogen

Human partial recombinant protein (AA 44-237) was used as the immunogen for this NR5A2 / LRH-1 antibody.

Storage

After reconstitution, the LRH-1 antibody can be stored for up to one month at 4°C. For long-term, aliquot and store at -20°C. Avoid repeated freezing and thawing.