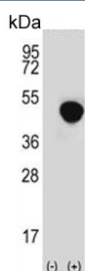


LRG1 Antibody / Leucine-rich alpha-2-glycoprotein (F54874)

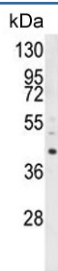
Catalog No.	Formulation	Size
F54874-0.4ML	In 1X PBS, pH 7.4, with 0.09% sodium azide	0.4 ml
F54874-0.08ML	In 1X PBS, pH 7.4, with 0.09% sodium azide	0.08 ml

[Bulk quote request](#)

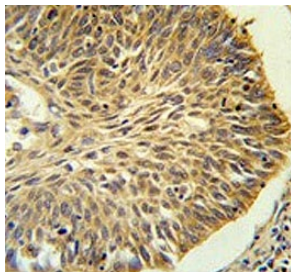
Availability	1-3 business days
Species Reactivity	Human
Format	Purified
Clonality	Polyclonal (rabbit origin)
Isotype	Rabbit Ig
Purity	Purified
UniProt	P02750
Applications	Flow Cytometry : 1:10-1:50 (1x10e6 cells) Western Blot : 1:500-1:1000 Immunohistochemistry (FFPE) : 1:50-1:100
Limitations	This LRG1 antibody is available for research use only.



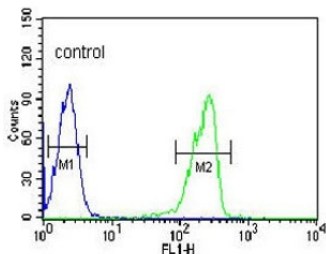
Western blot testing of 1) non-transfected and 2) transfected 293 cell lysate with LRG1 antibody.



Western blot testing of human HL60 cell lysate with LRG1 antibody. Predicted molecular weight ~38 kDa.



IHC testing of FFPE human lung carcinoma tissue with LRG1 antibody. HIER: steam section in pH6 citrate buffer for 20 min and allow to cool prior to staining.



Flow cytometry testing of human HL60 cells with LRG1 antibody; Blue=isotype control, Green= LRG1 antibody.

Description

The leucine-rich repeat (LRR) family of proteins, including LRG1, have been shown to be involved in protein-protein interaction, signal transduction, and cell adhesion and development. LRG1 is expressed during granulocyte differentiation.

Application Notes

The stated application concentrations are suggested starting points. Titration of the LRG1 antibody may be required due to differences in protocols and secondary/substrate sensitivity.

Immunogen

A portion of amino acids 86-114 from the human protein was used as the immunogen for the LRG1 antibody.

Storage

Aliquot the LRG1 antibody and store frozen at -20oC or colder. Avoid repeated freeze-thaw cycles.