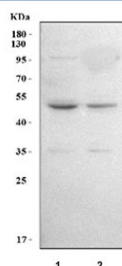


## LPLAT7 Antibody / Lysophospholipid acyltransferase 7 / LPGAT1 (RQ8585)

Catalog No.	Formulation	Size
RQ8585	0.5mg/ml if reconstituted with 0.2ml sterile DI water	100 ug

**Bulk quote request**

<b>Availability</b>	1-3 days
<b>Species Reactivity</b>	Human
<b>Format</b>	Antigen affinity purified
<b>Clonality</b>	Polyclonal (rabbit origin)
<b>Isotype</b>	Rabbit IgG
<b>Purity</b>	Antigen affinity purified
<b>Buffer</b>	Lyophilized from 1X PBS with 2% Trehalose
<b>UniProt</b>	Q92604
<b>Applications</b>	Western Blot : 0.5-1ug/ml ELISA : 0.1-0.5ug/ml
<b>Limitations</b>	This LPLAT7 antibody is available for research use only.



Western blot testing of human 1) A549 and 2) 293T cell lysate with LPLAT7 antibody. Predicted molecular weight ~43 kDa.

### Description

This gene encodes a member of the lysophospholipid acyltransferase family. The encoded protein catalyzes the reacylation of lysophosphatidylglycerol to phosphatidylglycerol, a membrane phospholipid that is an important precursor for the synthesis of cardiolipin. Alternative splicing results in multiple transcript variants.

### Application Notes

Optimal dilution of the LPLAT7 antibody should be determined by the researcher.

### Immunogen

An E.coli-derived human recombinant protein (amino acids A32-Q348) was used as the immunogen for the LPLAT7 antibody.

## Storage

After reconstitution, the LPLAT7 antibody can be stored for up to one month at 4oC. For long-term, aliquot and store at -20oC. Avoid repeated freezing and thawing.