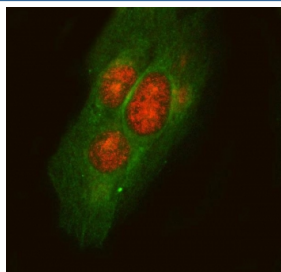


## LPLA2 Antibody / Lysosomal phospholipase A2 / PLA2G15 (RQ8062)

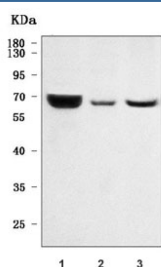
Catalog No.	Formulation	Size
RQ8062	0.5mg/ml if reconstituted with 0.2ml sterile DI water	100 ug

**Bulk quote request**

<b>Availability</b>	1-3 business days
<b>Species Reactivity</b>	Human
<b>Format</b>	Antigen affinity purified
<b>Clonality</b>	Polyclonal (rabbit origin)
<b>Isotype</b>	Rabbit IgG
<b>Purity</b>	Antigen affinity purified
<b>Buffer</b>	Lyophilized from 1X PBS with 2% Trehalose
<b>UniProt</b>	Q8NCC3
<b>Localization</b>	Nuclear, cytoplasmic, secreted
<b>Applications</b>	Western Blot : 0.5-1ug/ml Immunofluorescence : 5ug/ml Direct ELISA : 0.1-0.5ug/ml
<b>Limitations</b>	This LPLA2 antibody is available for research use only.



Immunofluorescent staining of FFPE human U-2 OS cells with LPLA2 antibody (red) and Alpha Tubulin mAb (green). HIER: steam section in pH6 citrate buffer for 20 min.



Western blot testing of human 1) placenta, 2) SiHa and 3) U-251 cell lysate with LPLA2 antibody. Predicted molecular weight ~47 kDa and 36 kDa (two isoforms) but may be observed at higher molecular weights due to glycosylation.

## Description

Lysosomal phospholipase A2, also known as LPLA2, PLA2G15, LLPL and ACS, is an enzyme that in humans is encoded by the PLA2G15 gene. Lysophospholipases are enzymes that act on biological membranes to regulate the multifunctional lysophospholipids. The protein encoded by this gene hydrolyzes lysophosphatidylcholine to glycerophosphorylcholine and a free fatty acid. This enzyme is present in the plasma and thought to be associated with high-density lipoprotein. A later paper contradicts the function of this gene. It demonstrates that this gene encodes a lysosomal enzyme instead of a lysophospholipase and has both calcium-independent phospholipase A2 and transacylase activities.

## Application Notes

Optimal dilution of the LPLA2 antibody should be determined by the researcher.

## Immunogen

E. coli-derived recombinant human protein (amino acids D92-Q372) was used as the immunogen for the LPLA2 antibody.

## Storage

After reconstitution, the LPLA2 antibody can be stored for up to one month at 4°C. For long-term, aliquot and store at -20°C. Avoid repeated freezing and thawing.