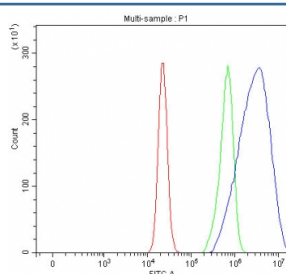


## LPAR3 Antibody / Lysophosphatidic acid receptor 3 / LPA3 (RQ8628)

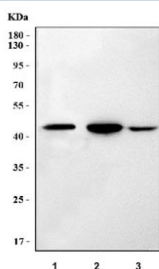
| Catalog No. | Formulation   | Size   |
|-------------|---|--------|
| RQ8628      | 0.5mg/ml if reconstituted with 0.2ml sterile DI water | 100 ug |

**Bulk quote request**

|                           |   |
|---------------------------|---|
| <b>Availability</b>       | 1-3 days  |
| <b>Species Reactivity</b> | Human, Mouse, Rat   |
| <b>Format</b>             | Antigen affinity purified   |
| <b>Clonality</b>          | Polyclonal (rabbit origin)  |
| <b>Isotype</b>            | Rabbit IgG  |
| <b>Purity</b>             | Antigen affinity purified   |
| <b>Buffer</b>             | Lyophilized from 1X PBS with 2% Trehalose   |
| <b>UniProt</b>            | Q9UBY5  |
| <b>Applications</b>       | Western Blot : 0.5-1ug/ml<br>Flow Cytometry : 1-3ug/million cells<br>ELISA : 0.1-0.5ug/ml |
| <b>Limitations</b>        | This LPAR3 antibody is available for research use only.                                   |



Flow cytometry testing of fixed and permeabilized human RT4 cells with LPAR3 antibody at 1ug/million cells (blocked with goat sera); Red=cells alone, Green=isotype control, Blue= LPAR3 antibody.



Western blot testing of 1) rat kidney, 2) mouse kidney and 3) mouse NIH 3T3 cell lysate with LPAR3 antibody. Predicted molecular weight ~40 kDa.

## Description

Lysophosphatidic acid receptor 3, also known as LPA3, is a protein that in humans is encoded by the LPAR3 gene. This gene encodes a member of the G protein-coupled receptor family, as well as the EDG family of proteins. This protein functions as a cellular receptor for lysophosphatidic acid and mediates lysophosphatidic acid-evoked calcium mobilization. This receptor couples predominantly to G(q/11) alpha proteins.

## Application Notes

Optimal dilution of the LPAR3 antibody should be determined by the researcher.

## Immunogen

An E.coli-derived human recombinant protein (amino acids M1-S353) was used as the immunogen for the LPAR3 antibody.

## Storage

After reconstitution, the LPAR3 antibody can be stored for up to one month at 4°C. For long-term, aliquot and store at -20°C. Avoid repeated freezing and thawing.