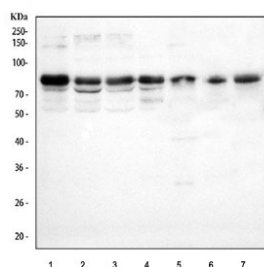


## LMF2 Antibody / Lipase maturation factor 2 (RQ8758)

Catalog No.	Formulation	Size
RQ8758	0.5mg/ml if reconstituted with 0.2ml sterile DI water	100 ug

**Bulk quote request**

<b>Availability</b>	1-3 days
<b>Species Reactivity</b>	Human
<b>Format</b>	Antigen affinity purified
<b>Clonality</b>	Polyclonal (rabbit origin)
<b>Isotype</b>	Rabbit IgG
<b>Purity</b>	Antigen affinity chromatography
<b>Buffer</b>	Lyophilized from 1X PBS with 2% Trehalose
<b>UniProt</b>	Q9BU23
<b>Applications</b>	Western Blot : 1-2ug/ml ELISA : 0.1-0.5ug/ml
<b>Limitations</b>	This LMF2 antibody is available for research use only.



Western blot testing of 1) human HeLa, 2) human 293T, 3) human SiHa, 4) human A431, 5) rat brain, 6) mouse brain and 7) mouse thymus tissue lysate with LMF2 antibody. Predicted molecular weight ~80 kDa, ~77 kDa, ~67 kDa (three isoforms).

### Description

LMF2 belongs to the lipase maturation factor family. LMF2 is involved in the maturation of specific proteins in the endoplasmic reticulum. It may be required for maturation and transport of active lipoprotein lipase (LPL) through the secretory pathway.

### Application Notes

Optimal dilution of the LMF2 antibody should be determined by the researcher.

### Immunogen

An E.coli-derived human recombinant protein (amino acids E132-A635) was used as the immunogen for the LMF2 antibody.

## Storage

After reconstitution, the LMF2 antibody can be stored for up to one month at 4oC. For long-term, aliquot and store at -20oC. Avoid repeated freezing and thawing.