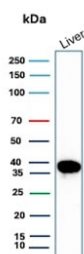


Liver Arginase Antibody / ARG1 [clone ARG1/9447] (V5754)

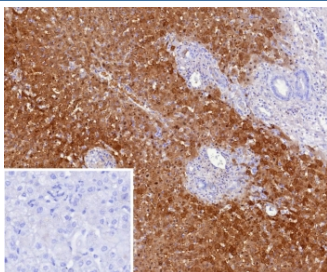
| Catalog No. | Formulation | Size |
|----------------|---|--------|
| V5754-100UG | 0.2 mg/ml in 1X PBS with 0.1 mg/ml BSA (US sourced), 0.05% sodium azide | 100 ug |
| V5754-20UG | 0.2 mg/ml in 1X PBS with 0.1 mg/ml BSA (US sourced), 0.05% sodium azide | 20 ug |
| V5754SAF-100UG | 1 mg/ml in 1X PBS; BSA free, sodium azide free | 100 ug |

[Bulk quote request](#)

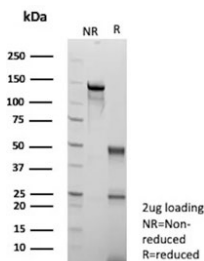
| | |
|---------------------------|---|
| Availability | 1-3 business days |
| Species Reactivity | Human |
| Format | Purified |
| Clonality | Monoclonal (mouse origin) |
| Isotype | Mouse IgG2a, kappa |
| Clone Name | ARG1/9447 |
| Purity | Protein G affinity |
| UniProt | P05089 |
| Localization | Cytoplasm |
| Applications | Immunohistochemistry (FFPE) : 1-2ug/ml Western Blot : 2-4ug/ml |
| Limitations | This Liver Arginase antibody is available for research use only. |



Western blot testing of human liver tissue lysate with Liver Arginase antibody (clone ARG1/9447). Predicted molecular weight ~35 kDa.



IHC staining of FFPE human hepatocellular carcinoma tissue with Liver Arginase antibody (clone ARG1/9447). Inset: PBS used in place of primary Ab (secondary Ab negative control). HIER: boil tissue sections in pH 9 10mM Tris with 1mM EDTA for 20 min and allow to cool before testing.



SDS-PAGE analysis of purified, BSA-free Liver Arginase antibody (clone ARG1/9447) as confirmation of integrity and purity.

Description

Recognizes a protein of 35-38kDa, which is identified as Arginase 1 (ARG1). Arginase is a manganese metallo-enzyme that catalyzes the hydrolysis of arginine to generate ornithine and urea. Arginase I and II are isoenzymes, which differ in subcellular localization, regulation, and possibly function. Arginase I is a cytosolic enzyme, which is expressed mainly in the liver as part of the urea cycle, whereas arginase II is a mitochondrial protein found in a variety of tissues. Antibody to ARG-1 labels hepatocytes in normal tissues and granulocytes in peripheral blood. ARG-1 is a sensitive and specific marker for identification of hepatocellular carcinoma.

Application Notes

Optimal dilution of the Liver Arginase antibody should be determined by the researcher.

Immunogen

A portion of amino acids 1-200 from human ARG1 protein was used as the immunogen for the Liver Arginase antibody.

Storage

Aliquot the Liver Arginase antibody and store frozen at -20oC or colder. Avoid repeated freeze-thaw cycles.