

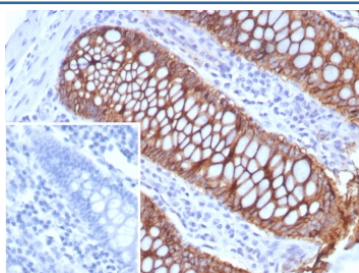
## LI Cadherin Antibody / Cadherin 17 [clone rCDH17/8514] (V5219)

Catalog No.	Formulation	Size
V5219-100UG	0.2 mg/ml in 1X PBS with 0.1 mg/ml BSA (US sourced), 0.05% sodium azide	100 ug
V5219-20UG	0.2 mg/ml in 1X PBS with 0.1 mg/ml BSA (US sourced), 0.05% sodium azide	20 ug
V5219SAF-100UG	1 mg/ml in 1X PBS; BSA free, sodium azide free	100 ug

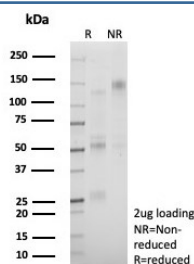
Recombinant **MOUSE MONOCLONAL**

[Bulk quote request](#)

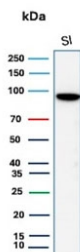
<b>Availability</b>	1-3 business days
<b>Species Reactivity</b>	Human
<b>Format</b>	Purified
<b>Clonality</b>	Recombinant Mouse Monoclonal
<b>Isotype</b>	Mouse IgG1, kappa
<b>Clone Name</b>	rCDH17/8514
<b>Purity</b>	Protein A affinity
<b>UniProt</b>	Q12864
<b>Localization</b>	Cell Surface, Cytoplasm
<b>Applications</b>	Immunohistochemistry (FFPE) : 1-2ug/ml for 30 min at RT Western Blot : 2-4ug/ml
<b>Limitations</b>	This LI Cadherin antibody is available for research use only.



IHC staining of FFPE human colon tissue with LI Cadherin antibody (clone rCDH17/8514). Inset: PBS used in place of primary Ab (secondary Ab negative control).  
HIER: boil tissue sections in pH 9 10mM Tris with 1mM EDTA for 20 min and allow to cool before testing.



SDS-PAGE analysis of purified, BSA-free LI Cadherin antibody (clone rCDH17/8514) as confirmation of integrity and purity.



Western blot testing of human small intestine tissue lysate with LI Cadherin antibody. Predicted molecular weight ~92 kDa but may be observed at higher molecular weights due to glycosylation.

## Description

It recognizes a protein of 120kDa, which is identified as Cadherin 17 (also known as LI Cadherin). The cadherins are a family of Calcium-dependent adhesion molecules that function to mediate cell-cell binding critical to the maintenance of tissue structure and morphogenesis. Cadherins each contain a large extracellular domain at the amino terminus, which is characterized by a series of five homologous repeats, the most distal of which is thought to be responsible for binding specificity. The relatively short carboxy terminal, intracellular domain interacts with a variety of cytoplasmic proteins, including beta-catenin, to regulate cadherin function. LI-cadherin (for liver-intestine-cadherin) expression is restricted to liver and intestine tissues and is specifically localized to the basolateral domain of hepatocytes and enterocytes.

## Application Notes

Optimal dilution of the LI Cadherin antibody should be determined by the researcher.

## Immunogen

A recombinant partial protein sequence (within amino acids 242-418) from the human protein was used as the immunogen for the LI Cadherin antibody.

## Storage

Aliquot the LI Cadherin antibody and store frozen at -20oC or colder. Avoid repeated freeze-thaw cycles.