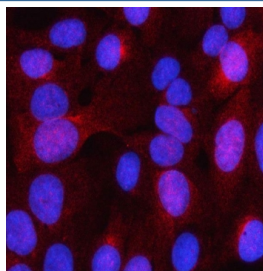


## LHPP Antibody / Phospholysine phosphohistidine inorganic pyrophosphate phosphatase (RQ8608)

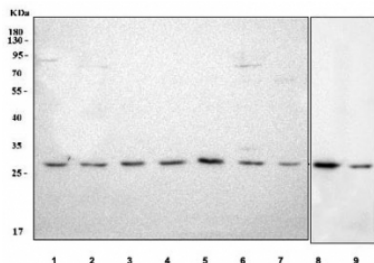
Catalog No.	Formulation	Size
RQ8608	0.5mg/ml if reconstituted with 0.2ml sterile DI water	100 ug

**Bulk quote request**

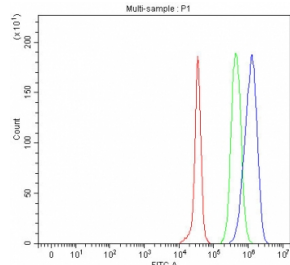
<b>Availability</b>	1-3 days
<b>Species Reactivity</b>	Human, Mouse, Rat
<b>Format</b>	Antigen affinity purified
<b>Clonality</b>	Polyclonal (rabbit origin)
<b>Isotype</b>	Rabbit IgG
<b>Purity</b>	Antigen affinity purified
<b>Buffer</b>	Lyophilized from 1X PBS with 2% Trehalose
<b>UniProt</b>	Q9H008
<b>Localization</b>	Cytoplasm, Nucleus
<b>Applications</b>	Western Blot : 0.5-1ug/ml Immunofluorescence : 5ug/ml Flow Cytometry : 1-3ug/million cells ELISA : 0.1-0.5ug/ml
<b>Limitations</b>	This LHPP antibody is available for research use only.



Immunofluorescent staining of FFPE human U-2 OS cells with LHPP antibody (red) and DAPI nuclear stain (blue). HIER: steam section in pH6 citrate buffer for 20 min.



Western blot testing of 1) human A549, 2) human HeLa, 3) human A431, 4) human HepG2, 5) human HaCaT, 6) human MCF7, 7) human HEL, 8) rat RH35 and 9) mouse HEPA1-6 cell lysate with LHPP antibody. Predicted molecular weight ~29 kDa.



Flow cytometry testing of fixed and permeabilized human JK cells with LHPP antibody at 1ug/million cells (blocked with goat sera); Red=cells alone, Green=isotype control, Blue=LHPP antibody.

## Description

LHPP, also known as HDHD2B, is a 270 amino acid protein that exists as a homodimer and is a member of the HAD-like hydrolase superfamily. Expressed in liver, kidney and moderately in brain, LHPP is encoded by a gene located on 10, which houses over 1,200 genes and comprises nearly 4.5 % of the human genome. Defects in some of the genes that map to chromosome 10 are associated with Charcot-Marie Tooth disease, Jackson-Weiss syndrome, Usher syndrome, nonsyndromic deafness, Wolman's syndrome, Cowden syndrome, multiple endocrine neoplasia type 2 and porphyria.

## Application Notes

Optimal dilution of the LHPP antibody should be determined by the researcher.

## Immunogen

An E.coli-derived human recombinant protein (amino acids K6-K270) was used as the immunogen for the LHPP antibody.

## Storage

After reconstitution, the LHPP antibody can be stored for up to one month at 4°C. For long-term, aliquot and store at -20°C. Avoid repeated freezing and thawing.