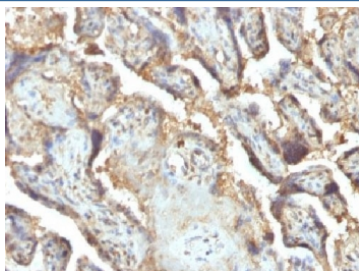


LGALS13 Antibody / Galectin 13 [clone PP13/1165] (V3339)

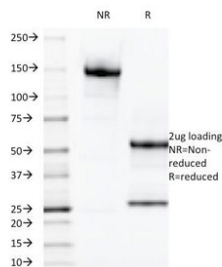
Catalog No.	Formulation	Size
V3339-100UG	0.2 mg/ml in 1X PBS with 0.1 mg/ml BSA (US sourced) and 0.05% sodium azide	100 ug
V3339-20UG	0.2 mg/ml in 1X PBS with 0.1 mg/ml BSA (US sourced) and 0.05% sodium azide	20 ug
V3339SAF-100UG	1 mg/ml in 1X PBS; BSA free, sodium azide free	100 ug

Bulk quote request

Availability	1-3 business days
Species Reactivity	Human
Format	Purified
Clonality	Monoclonal (mouse origin)
Isotype	Mouse IgG2b, kappa
Clone Name	PP13/1165
Purity	Protein G affinity chromatography
UniProt	Q9UHV8
Localization	Cytoplasmic, cell surface
Applications	ELISA (order BSA/sodium Azide-free Format For Coating) : Immunohistochemistry (FFPE) : 0.5-1ug/ml for 30 min at RT
Limitations	This LGALS13 antibody is available for research use only.



IHC testing of FFPE human placenta with LGALS13 antibody (clone PP13/1165).
Required HIER: boil tissue sections in 10mM Tris with 1mM EDTA, pH 9 or 10mM Citrate buffer, pH 6, for 10-20.



SDS-PAGE Analysis of Purified, BSA-Free LGALS13 Antibody (clone PP13/1165). Confirmation of Integrity and Purity of the Antibody.

Description

It recognizes a 32kDa protein, which is identified as homodimer of LGALS13/Galectin 13 (also known as PP13). Galectins are a family of soluble β -galactoside-binding lectins that modulate cell-to-cell adhesion and cell-to-extracellular matrix (ECM) interactions and play a role in tumor progression, pre-mRNA splicing and apoptosis. One such member, LGALS13, is a 139 amino acid protein that contains one galectin domain. Possessing lysophospholipase activity, LGALS13 exists as a disulfide-linked homodimer. LGALS13 is suggested to have a developmental role in the placenta and may display immunobiological activity in fetomaternal blood-spaces. Screening for LGALS13/Galectin 13 in maternal serum during the first trimester of pregnancy may serve as a diagnostic marker to predict preterm pre-eclampsia.

Application Notes

Titration of the LGALS13 antibody may be required for optimal performance.

Immunogen

A human partial recombinant protein corresponding to amino acids 23-134 was used as the immunogen for the LGALS13 antibody.

Storage

Store the LGALS13 antibody at 2-8°C (with azide) or aliquot and store at -20°C or colder (without azide).