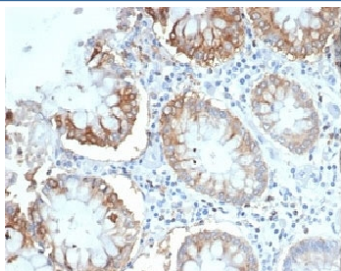


LFA-2 Antibody / Lymphocyte Function Antigen 2 / CD2 [clone LFA2/7100] (V4059)

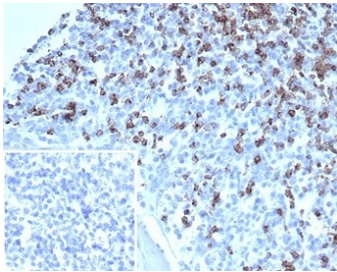
Catalog No.	Formulation	Size
V4059-100UG	0.2 mg/ml in 1X PBS with 0.1 mg/ml BSA (US sourced), 0.05% sodium azide	100 ug
V4059-20UG	0.2 mg/ml in 1X PBS with 0.1 mg/ml BSA (US sourced), 0.05% sodium azide	20 ug
V4059SAF-100UG	1 mg/ml in 1X PBS; BSA free, sodium azide free	100 ug

Bulk quote request

Availability	1-3 business days
Species Reactivity	Human
Format	Purified
Clonality	Monoclonal (mouse origin)
Isotype	Mouse IgG2b, kappa
Clone Name	LFA2/7100
Purity	Protein A/G affinity
UniProt	P06729
Localization	Cell surface
Applications	Immunohistochemistry (FFPE) : 1-2ug/ml
Limitations	This LFA-2 antibody is available for research use only.

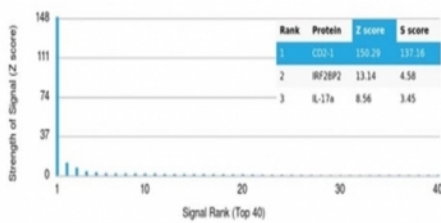


IHC staining of FFPE human colon tissue with LFA-2 antibody (clone LFA2/7100). HIER: boil tissue sections in pH 9 10mM Tris with 1mM EDTA for 20 min and allow to cool before testing.

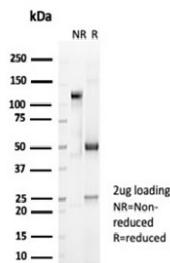


IHC staining of FFPE human tonsil tissue with LFA-2 antibody (clone LFA2/7100). Negative control inset: PBS used instead of primary antibody to control for secondary Ab binding. HIER: boil tissue sections in pH 9 10mM Tris with 1mM EDTA for 20 min and allow to cool before testing.

Human Protein Microarray Specificity Validation



Analysis of HuProt(TM) microarray containing more than 19,000 full-length human proteins using LFA-2 antibody (clone LFA2/7100). These results demonstrate the foremost specificity of the LFA2/7100 mAb. Z- and S- score: The Z-score represents the strength of a signal that an antibody (in combination with a fluorescently-tagged anti-IgG secondary Ab) produces when binding to a particular protein on the HuProt(TM) array. Z-scores are described in units of standard deviations (SD's) above the mean value of all signals generated on that array. If the targets on the HuProt(TM) are arranged in descending order of the Z-score, the S-score is the difference (also in units of SD's) between the Z-scores. The S-score therefore represents the relative target specificity of an Ab to its intended target.



SDS-PAGE analysis of purified, BSA-free LFA-2 antibody (clone LFA2/7100) as confirmation of integrity and purity.

Description

CD2 is mainly present on the surface of mature T cells and NK cell membranes, while B cells are usually not expressed. It can be used to label the diagnosis and study of normal T cells and their associated tumors, such as pre-t cell lymphoma, marginal T cell lymphoma and anaplastic cell lymphoma. CD2 antibody is useful for identification of precursor and mature T-cell lymphomas. Aberrant loss of CD2 in T-cell lymphomas may help to distinguish them from reactive T-cell proliferations.

Application Notes

Optimal dilution of the LFA-2 antibody should be determined by the researcher.

Immunogen

A recombinant fragment from the human CD2 protein was used as the immunogen for the LFA-2 antibody.

Storage

Aliquot the LFA-2 antibody and store frozen at -20oC or colder. Avoid repeated freeze-thaw cycles.

