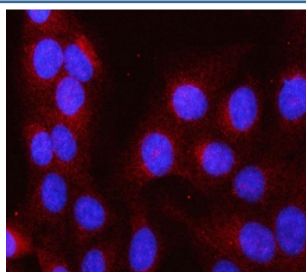


## Leucine aminopeptidase 3 Antibody / LAP3 (RQ8502)

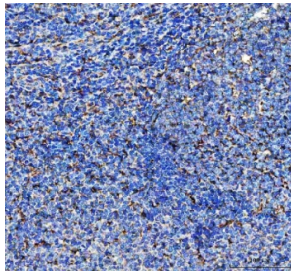
Catalog No.	Formulation	Size
RQ8502	0.5mg/ml if reconstituted with 0.2ml sterile DI water	100 ug

**Bulk quote request**

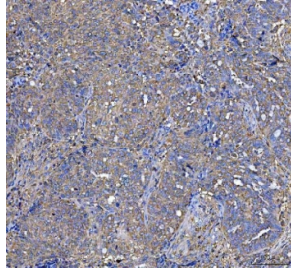
<b>Availability</b>	1-3 days
<b>Species Reactivity</b>	Human, Mouse, Rat
<b>Format</b>	Antigen affinity purified
<b>Clonality</b>	Polyclonal (rabbit origin)
<b>Isotype</b>	Rabbit IgG
<b>Purity</b>	Antigen affinity purified
<b>Buffer</b>	Lyophilized from 1X PBS with 2% Trehalose
<b>UniProt</b>	P28838
<b>Localization</b>	Cytoplasm
<b>Applications</b>	Western Blot : 0.5-1ug/ml Immunohistochemistry (FFPE) : 2-5ug/ml Immunofluorescence : 5ug/ml ELISA : 0.1-0.5ug/ml
<b>Limitations</b>	This Leucine aminopeptidase 3 antibody is available for research use only.



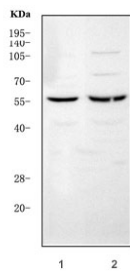
Immunofluorescent staining of FFPE human U-2 OS cells with Leucine aminopeptidase 3 antibody (red) and DAPI nuclear stain (blue). HIER: steam section in pH6 citrate buffer for 20 min.



IHC staining of FFPE human tonsil tissue with Leucine aminopeptidase 3 antibody. HIER: boil tissue sections in pH8 EDTA for 20 min and allow to cool before testing.



IHC staining of FFPE human ovarian serous adenocarcinoma tissue with Leucine aminopeptidase 3 antibody. HIER: boil tissue sections in pH8 EDTA for 20 min and allow to cool before testing.



Western blot testing of 1) rat liver and 2) mouse liver tissue lysate with Leucine aminopeptidase 3 antibody. Predicted molecular weight ~56 kDa.

## Description

LAP3 (Leucine aminopeptidase 3) is also named as LAPEP and PEPS (peptidase S) and belongs to the peptidase M17 family. It can catalyzes the removal of unsubstituted N-terminal amino-acids from various peptides and be presumably involved in the processing end regular turnover of intracellular proteins. PEPS is found in a wide variety of tissues and cultured cells but not in red cells and skin. The enzyme can utilize several di-,tri-,and tetrapeptides as substrates and is the slowest migrating of the peptidases after electrophoresis.. LAP3 has two isoform with MW of 52 and 56 kDa.

## Application Notes

Optimal dilution of the Leucine aminopeptidase 3 antibody should be determined by the researcher.

## Immunogen

An E.coli-derived human recombinant protein (amino acids R130-K497) was used as the immunogen for the Leucine aminopeptidase 3 antibody.

## Storage

After reconstitution, the Leucine aminopeptidase 3 antibody can be stored for up to one month at 4oC. For long-term, aliquot and store at -20oC. Avoid repeated freezing and thawing.

