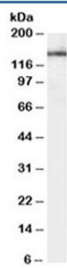


Leptin Receptor Antibody / LEPR / Ob-R (R36253)

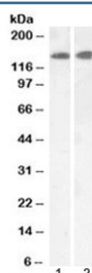
Catalog No.	Formulation	Size
R36253-100UG	0.5 mg/ml in 1X TBS, pH7.3, with 0.5% BSA (US sourced) and 0.02% sodium azide	100 ug

[Bulk quote request](#)

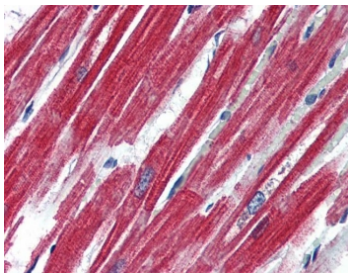
Availability	1-3 business days
Species Reactivity	Human
Predicted Reactivity	Dog
Format	Antigen affinity purified
Clonality	Polyclonal (goat origin)
Isotype	Goat Ig
Purity	Antigen affinity
Gene ID	3953
Applications	Western Blot : 1-3ug/ml IHC (FFPE) : 4ug/ml ELISA (peptide) LOD : 1:16000
Limitations	This Leptin Receptor antibody is available for research use only.



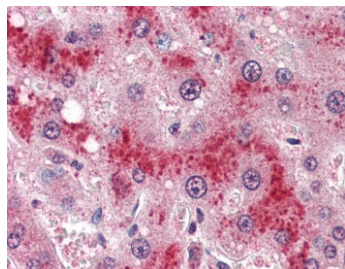
Western blot testing of human brain lysate with Leptin Receptor antibody at 1ug/ml.
Predicted molecular weight: ~ 125 kDa (long form), ~ 100 kDa (short form).



Western blot testing of 1) mouse brain and 2) rat brain lysate with Leptin Receptor antibody at 0.1ug/ml. Predicted molecular weight: ~ 125 kDa (long form), ~ 100 kDa (short form).



IHC testing of FFPE human heart tissue with Leptin Receptor antibody at 4ug/ml.
Required HIER: steamed antigen retrieval with pH6 citrate buffer; AP-staining.



IHC testing of FFPE human liver tissue with Leptin Receptor antibody at 4ug/ml.
Required HIER: steamed antigen retrieval with pH6 citrate buffer; AP-staining.

Description

Additional name(s) for this target protein: LEPR; CD295

Application Notes

Optimal dilution of the Leptin Receptor antibody should be determined by the researcher.

Immunogen

Amino acids TQDDIEKHQSDAG were used as the immunogen for this Leptin Receptor antibody.

Storage

Aliquot and store the Leptin Receptor antibody at -20oC.