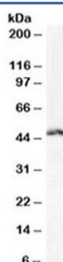


LEF1 Antibody (R35290)

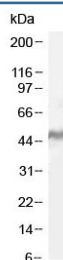
| Catalog No. | Formulation | Size |
|--------------|---|--------|
| R35290-100UG | 0.5 mg/ml in 1X TBS, pH7.3, with 0.5% BSA (US sourced) and 0.02% sodium azide | 100 ug |

[Bulk quote request](#)

| | |
|----------------------|--|
| Availability | 1-3 business days |
| Species Reactivity | Human |
| Predicted Reactivity | Mouse, Rat, Dog |
| Format | Antigen affinity purified |
| Clonality | Polyclonal (goat origin) |
| Isotype | Goat Ig |
| Purity | Antigen affinity |
| Gene ID | 51176 |
| Applications | Western Blot : 1-3ug/ml ELISA (peptide) LOD : 1:32000 |
| Limitations | This LEF1 antibody is available for research use only. |



Western blot testing of human Daudi cell lysate with LEF1 antibody at 1ug/ml. Predicted molecular weight ~44 kDa but commonly observed at 35-55 kDa.



Western blot testing of human MOLT4 cell lysate with LEF1 antibody at 1ug/ml. Predicted molecular weight ~44 kDa but commonly observed at 35-55 kDa.

Description

Additional name(s) for this target protein: Lymphoid enhancer-binding factor 1

Application Notes

Optimal dilution of the LEF1 antibody should be determined by the researcher.

Immunogen

Amino acids QHEQRKEQEPRPH were used as the immunogen for this LEF1 antibody.

Storage

Aliquot and store the LEF1 antibody at -20oC.