

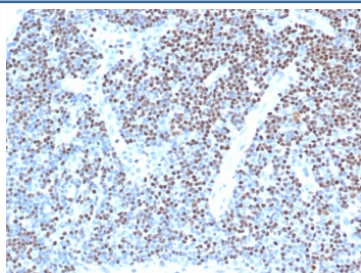
LEF1 Antibody / Lymphoid enhancer-binding factor 1 / TCF1 alpha [clone LEF1/341R] (V9278)

Catalog No.	Formulation	Size
V9278-100UG	0.2 mg/ml in 1X PBS with 0.1 mg/ml BSA (US sourced), 0.05% sodium azide	100 ug
V9278-20UG	0.2 mg/ml in 1X PBS with 0.1 mg/ml BSA (US sourced), 0.05% sodium azide	20 ug
V9278SAF-100UG	1 mg/ml in 1X PBS; BSA free, sodium azide free	100 ug

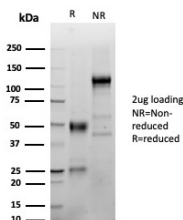
Recombinant **RABBIT MONOCLONAL**

[Bulk quote request](#)

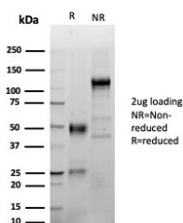
Availability	1-3 business days
Species Reactivity	Human
Format	Purified
Clonality	Recombinant Rabbit Monoclonal
Isotype	Rabbit IgG
Clone Name	LEF1/341R
Purity	Protein A/G affinity
UniProt	Q9UJU2
Localization	Nucleus
Applications	Immunohistochemistry (FFPE) : 2-4ug/ml
Limitations	This LEF1 antibody is available for research use only.



IHC staining of FFPE human lymph node with LEF1 antibody (clone LEF1/341R) at 2ug/ml in PBS for 30min RT. Strong nuclear staining of non-germinal center observed. HIER: boil tissue sections in pH 9 10mM Tris with 1mM EDTA for 20 min and allow to cool before testing.



IHC staining of FFPE human tonsil tissue with LEF1 antibody (clone LEF1/341R) at 2ug/ml in PBS for 30min RT. Strong nuclear staining of non-germinal center cells is observed. HIER: boil tissue sections in pH 9 10mM Tris with 1mM EDTA for 20 min and allow to cool before testing. Inset: PBS instead of primary. Secondary antibody negative control.



SDS-PAGE analysis of purified, BSA-free LEF1 antibody (clone LEF1/341R) as confirmation of integrity and purity.

Description

Lymphoid Enhancing Factor 1 (LEF1), also called T cell-specific transcription factor 1-alpha (TCF1 alpha) is a transcription factor that belongs to the TCF/LEF family. LEF1 participates as a regulator in Wnt signaling pathways. LEF1 is an important factor in lymphopoiesis and is expressed normally in T and pro-B cells but not expressed in mature B cells.

Application Notes

Optimal dilution of the LEF1 antibody should be determined by the researcher.

Immunogen

A portion of amino acids 100-200 was used as the immunogen for the LEF1 antibody.

Storage

Aliquot the LEF1 antibody and store frozen at -20oC or colder. Avoid repeated freeze-thaw cycles.