

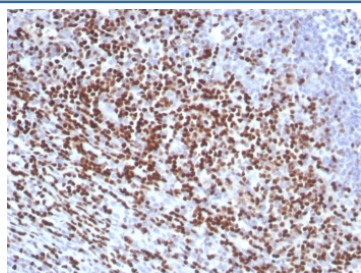
LEF1 Antibody / Lymphoid enhancer-binding factor 1 / TCF alpha [clone rLEF1/8854] (V5056)

Catalog No.	Formulation	Size
V5056-100UG	0.2 mg/ml in 1X PBS with 0.1 mg/ml BSA (US sourced), 0.05% sodium azide	100 ug
V5056-20UG	0.2 mg/ml in 1X PBS with 0.1 mg/ml BSA (US sourced), 0.05% sodium azide	20 ug
V5056SAF-100UG	1 mg/ml in 1X PBS; BSA free, sodium azide free	100 ug

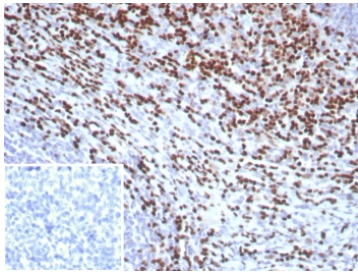
Recombinant MOUSE MONOCLONAL

[Bulk quote request](#)

Availability	1-3 business days
Species Reactivity	Human
Format	Purified
Clonality	Recombinant Mouse Monoclonal
Isotype	Mouse IgG1, kappa
Clone Name	rLEF1/8854
Purity	Protein A/G affinity
UniProt	Q9UJU2
Localization	Nucleus
Applications	Immunohistochemistry (FFPE) : 1-2ug/ml for 30 min at RT
Limitations	This LEF1 antibody is available for research use only.



IHC staining of FFPE human tonsil tissue with LEF1 antibody (clone rLEF1/8854). HIER: boil tissue sections in pH 9 10mM Tris with 1mM EDTA for 20 min and allow to cool before testing.



IHC staining of FFPE human tonsil tissue with LEF1 antibody (clone rLEF1/8854). Inset: PBS instead of primary. Secondary antibody negative control.

Description

Lymphoid Enhancing Factor 1 (LEF1) is a transcription factor that belongs to the TCF/LEF family. LEF1 participates as a regulator in Wnt signaling pathways. LEF1 is an important factor in lymphopoiesis and is expressed normally in T and pro-B cells but not expressed in mature B cells. Anti-LEF1 may be used as an aid for differentiation of chronic lymphocytic leukemia/small lymphocytic lymphoma from other small B cell lymphomas.

Application Notes

Optimal dilution of the LEF1 antibody should be determined by the researcher.

Immunogen

A recombinant partial protein sequence (within amino acids 1-399) from the human protein was used as the immunogen for the LEF1 antibody.

Storage

Aliquot the LEF1 antibody and store frozen at -20°C or colder. Avoid repeated freeze-thaw cycles.