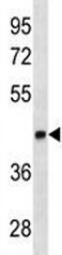


LEF1 Antibody [clone 661CT8.3.5] (F53737)

Catalog No.	Formulation	Size
F53737-0.1ML	In ascites with 0.09% sodium azide	0.1 ml

Bulk quote request

Availability	1-3 business days
Species Reactivity	Human
Predicted Reactivity	Mouse, Rat
Format	Ascites
Clonality	Monoclonal (mouse origin)
Isotype	Mouse IgG1
Clone Name	661CT8.3.5
Purity	Ascites
UniProt	Q9UJU2
Applications	Western Blot : 1:500-1:8000
Limitations	This LEF1 antibody is available for research use only.



LEF1 antibody western blot analysis in K562 lysate. Predicted molecular weight ~44 kDa but commonly observed at 35-55 kDa.

Description

This gene encodes a transcription factor belonging to a family of proteins that share homology with the high mobility group protein-1. The protein encoded by this gene can bind to a functionally important site in the T-cell receptor-alpha enhancer, thereby conferring maximal enhancer activity. This transcription factor is involved in the Wnt signaling pathway, and it may function in hair cell differentiation and follicle morphogenesis. Mutations in this gene have been found in somatic sebaceous tumors. This gene has also been linked to other cancers, including androgen-independent prostate cancer. Alternative splicing results in multiple transcript variants.

Application Notes

Titration of the LEF1 antibody may be required due to differences in protocols and secondary/substrate sensitivity.

Immunogen

A portion of amino acids 10-37 from the human protein was used as the immunogen for this LEF1 antibody.

Storage

Aliquot the LEF1 antibody and store frozen at -20oC or colder. Avoid repeated freeze-thaw cycles.