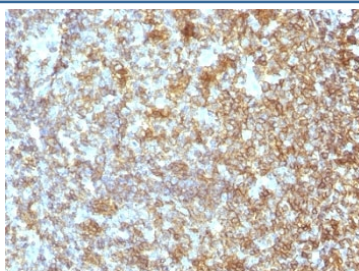


LCA Antibody [clone SPM496] (V2400)

Catalog No.	Formulation	Size
V2400-100UG	0.2 mg/ml in 1X PBS with 0.1 mg/ml BSA (US sourced) and 0.05% sodium azide	100 ug
V2400-20UG	0.2 mg/ml in 1X PBS with 0.1 mg/ml BSA (US sourced) and 0.05% sodium azide	20 ug
V2400SAF-100UG	1 mg/ml in 1X PBS; BSA free, sodium azide free	100 ug
V2400IHC-7ML	Prediluted in 1X PBS with 0.1 mg/ml BSA (US sourced) and 0.05% sodium azide; *For IHC use only*	7 ml

[Bulk quote request](#)

Species Reactivity	Human
Format	Purified
Clonality	Monoclonal (mouse origin)
Isotype	Mouse IgG1, kappa
Clone Name	SPM496
Purity	Protein G affinity chromatography
Buffer	1X PBS, pH 7.4
UniProt	P08575
Localization	Cell surface and cytoplasmic
Applications	Immunohistochemistry (FFPE) : 1-2ug/ml for 30 min at RT
Limitations	This LCA antibody is available for research use only.



IHC test of FFPE human tonsil probed with LCA antibody

Description

Application Notes

Due to variation in protocol and secondary antibody used, the LCA antibody may need to be titered for optimal performance.

1. FFPE staining requires boiling tissue sections in pH 9 10mM Tris with 1mM EDTA for 10-20 min followed by cooling at RT for 20 minutes.
2. The prediluted format is supplied in a dropper bottle and is optimized for use in IHC. After epitope retrieval step (if required), drip mAb solution onto the tissue section and incubate at RT for 30 min.

Immunogen

Stimulated human leukocytes were used as the immunogen for the LCA antibody.

Storage

LCA antibody (with azide) can be stored at 2-8oC. The azide-free format should be aliquoted and stored at -20oC or colder.

References (2)