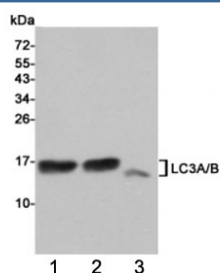


## LC3A/B Antibody [clone 3E9-E5-C9] (F54060)

Catalog No.	Formulation	Size
F54060-0.1ML	In PBS with 50% glycerol and 0.03% ProClin 300	0.1 ml

**Bulk quote request**

<b>Availability</b>	1-3 business days
<b>Species Reactivity</b>	Human, Rat
<b>Format</b>	Purified
<b>Clonality</b>	Monoclonal (mouse origin)
<b>Isotype</b>	Mouse IgG2b
<b>Clone Name</b>	3E9-E5-C9
<b>Purity</b>	Protein G affinity
<b>UniProt</b>	Q9H492, Q9GZQ8
<b>Applications</b>	Western Blot : 1:1000
<b>Limitations</b>	This LC3A/B antibody is available for research use only.



Western blot testing of 1) rat cerebral cortex, 2) rat brain and 3) human HeLa cell lysates using LC3A/B antibody at 1:1000. Predicted molecular weight: ~14 kDa (LC3A) and ~15 kDa (LC3B).

## Description

### Application Notes

The stated application concentrations are suggested starting points. Titration of the LC3A/B antibody may be required due to differences in protocols and secondary/substrate sensitivity.

### Immunogen

A synthetic LC3B peptide was used as the immunogen for this LC3A/B antibody.

## Storage

Store the LC3A/B antibody at -20oC.