

LC3A Antibody / MAP1LC3A (RQ4314)

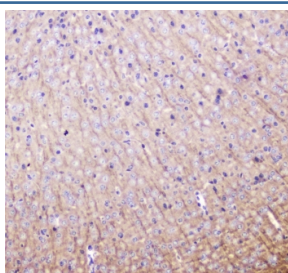
Catalog No.	Formulation	Size
RQ4314	0.5mg/ml if reconstituted with 0.2ml sterile DI water	100 ug

Bulk quote request

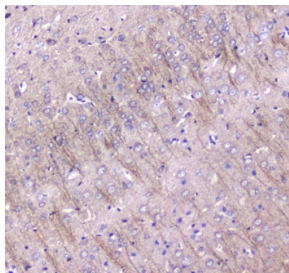
Availability	1-3 business days
Species Reactivity	Human, Mouse, Rat
Format	Antigen affinity purified
Clonality	Polyclonal (rabbit origin)
Isotype	Rabbit IgG
Purity	Antigen affinity purified
Buffer	Lyophilized from 1X PBS with 2% Trehalose and 0.025% sodium azide
UniProt	Q9H492
Localization	Cytoplasm, cytoskeleton
Applications	Western Blot : 0.5-1ug/ml IHC (FFPE) : 1-2ug/ml Direct ELISA : 0.1-0.5ug/ml
Limitations	This LC3A antibody is available for research use only.



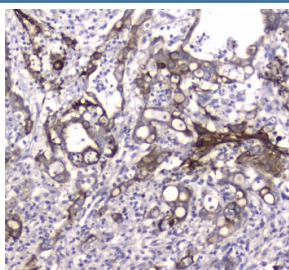
Western blot testing of 1) rat brain and 2) mouse brain lysate with LC3A antibody at 0.5ug/ml. Predicted molecular weight ~14 kDa.



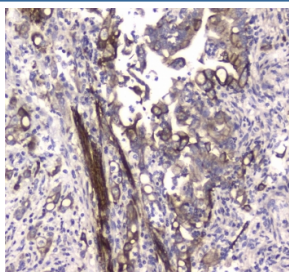
IHC testing of FFPE mouse brain tissue with LC3A antibody at 1ug/ml. Required HIER: steam section in pH6 citrate buffer for 20 min and allow to cool prior to staining.



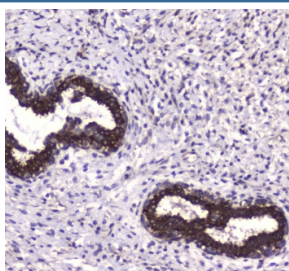
IHC testing of FFPE rat brain tissue with LC3A antibody at 1ug/ml. Required HIER: steam section in pH6 citrate buffer for 20 min and allow to cool prior to staining.



IHC testing of FFPE human colon cancer tissue with LC3A antibody at 1ug/ml. Required HIER: steam section in pH6 citrate buffer for 20 min and allow to cool prior to staining.



IHC testing of FFPE human colon cancer tissue with LC3A antibody at 1ug/ml. Required HIER: steam section in pH6 citrate buffer for 20 min and allow to cool prior to staining.



IHC testing of FFPE human breast cancer tissue with LC3A antibody at 1ug/ml. Required HIER: steam section in pH6 citrate buffer for 20 min and allow to cool prior to staining.

Description

Microtubule-associated proteins 1A/1B light chain 3A is a protein that in humans is encoded by the MAP1LC3A gene. MAP1A and MAP1B are microtubule-associated proteins which mediate the physical interactions between microtubules and components of the cytoskeleton. MAP1A and MAP1B each consist of a heavy chain subunit and multiple light chain subunits. The protein encoded by this gene is one of the light chain subunits and can associate with either MAP1A or MAP1B.

Application Notes

Optimal dilution of the LC3A antibody should be determined by the researcher.

Immunogen

A recombinant human protein corresponding to amino acids M1-G120 was used as the immunogen for the LC3A antibody.

Storage

After reconstitution, the LC3A antibody can be stored for up to one month at 4°C. For long-term, aliquot and store at

-20oC. Avoid repeated freezing and thawing.