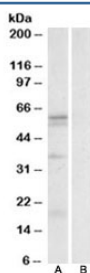


LAT1 Antibody / L-type amino Acid Transporter 1 / SLC7A5 (R35630)

Catalog No.	Formulation	Size
R35630-100UG	0.5 mg/ml in 1X TBS, pH7.3, with 0.5% BSA (US sourced) and 0.02% sodium azide	100 ug

[Bulk quote request](#)

Availability	1-3 business days
Species Reactivity	Human
Predicted Reactivity	Dog
Format	Antigen affinity purified
Clonality	Polyclonal (goat origin)
Isotype	Goat Ig
Purity	Antigen affinity
Gene ID	8140
Applications	Western Blot : 1-3ug/ml ELISA (peptide) LOD : 1:64000
Limitations	This LAT1 antibody is available for research use only.



Western blot testing of human spleen lysate with LAT1 antibody at 0.3ug/ml with [B] and without [A] blocking/immunizing peptide. Predicted molecular weight ~55kDa.

Description

Additional name(s) for this target protein: L-type amino acid transporter 1, SLC7A5, solute carrier family 7 (cationic amino acid transporter, y+ system), member 5

Application Notes

Optimal dilution of the LAT1 antibody should be determined by the researcher.

Immunogen

Amino acids RHRKPELERPIKVN were used as the immunogen for this LAT1 antibody.

Storage

Aliquot and store the LAT1 antibody at -20oC.