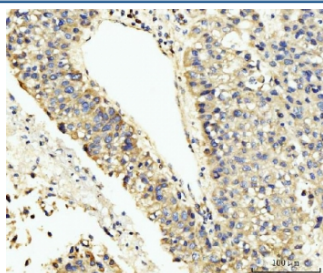


LARP4B Antibody / La-related protein 4B (RQ6651)

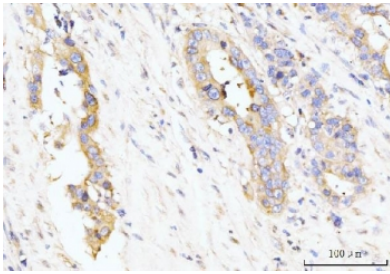
Catalog No.	Formulation	Size
RQ6651	0.5mg/ml if reconstituted with 0.2ml sterile DI water	100 ug

Bulk quote request

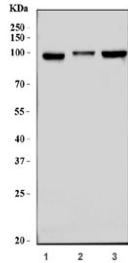
Availability	1-3 business days
Species Reactivity	Human
Format	Antigen affinity purified
Clonality	Polyclonal (rabbit origin)
Isotype	Rabbit IgG
Purity	Antigen affinity purified
Buffer	Lyophilized from 1X PBS with 2% Trehalose
UniProt	Q92615
Localization	Cytoplasmic
Applications	Western Blot : 1-2ug/ml Immunohistochemistry (FFPE) : 2-5ug/ml Flow Cytometry : 1-3ug/million cells Immunofluorescence : 5ug/ml Direct ELISA : 0.1-0.5ug/ml
Limitations	This LARP4B antibody is available for research use only.



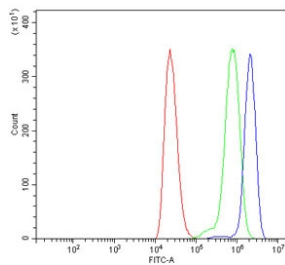
IHC staining of FFPE human liver cancer tissue with LARP4B antibody. HIER: boil tissue sections in pH8 EDTA for 20 min and allow to cool before testing.



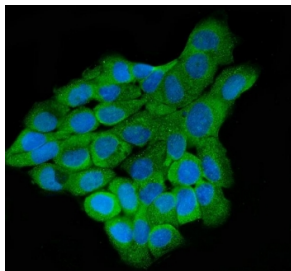
IHC staining of FFPE human appendiceal adenocarcinoma tissue with LARP4B antibody. HIER: boil tissue sections in pH8 EDTA for 20 min and allow to cool before testing.



Western blot testing of human 1) HEK293, 2) Jurkat and 3) K562 cell lysate with LARP4B antibody. Predicted molecular weight ~81 kDa.



Flow cytometry testing of human ThP-1 cells with LARP4B antibody at 1ug/million cells (blocked with goat sera); Red=cells alone, Green=isotype control, Blue= LARP4B antibody.



Immunofluorescent staining of FFPE human A431 cells with LARP4B antibody (green) and DAPI nuclear stain (blue). HIER: steam section in pH6 citrate buffer for 20 min.

Description

This gene encodes a member of an evolutionarily conserved protein family implicated in RNA metabolism and translation. Members of this family are characterized by the presence of an La motif, which is often located adjacent to one or more RNA recognition motifs (RRM). Together, the two motifs constitute the functional region of the protein and enable its interaction with the RNA substrate. This protein family is divided into five sub-families: the genuine La proteins and four La-related protein (LARP) sub-families. The protein encoded by this gene belongs to LARP sub-family 4. It is a cytoplasmic protein that may play a stimulatory role in translation.

Application Notes

Optimal dilution of the LARP4B antibody should be determined by the researcher.

Immunogen

Recombinant human protein (amino acids R241-K684) was used as the immunogen for the LARP4B antibody.

Storage

After reconstitution, the LARP4B antibody can be stored for up to one month at 4°C. For long-term, aliquot and store at -20°C. Avoid repeated freezing and thawing.

