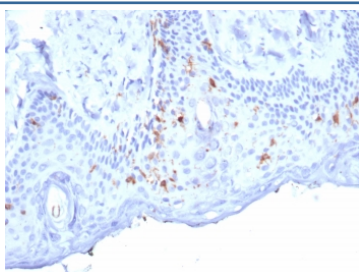


## Langerin Antibody / CD207 [clone LGRN/7357] (V4881)

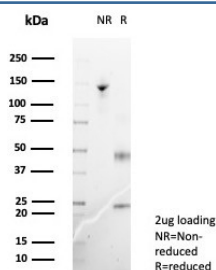
Catalog No.	Formulation	Size
V4881-100UG	0.2 mg/ml in 1X PBS with 0.1 mg/ml BSA (US sourced), 0.05% sodium azide	100 ug
V4881-20UG	0.2 mg/ml in 1X PBS with 0.1 mg/ml BSA (US sourced), 0.05% sodium azide	20 ug
V4881SAF-100UG	1 mg/ml in 1X PBS; BSA free, sodium azide free	100 ug

[Bulk quote request](#)

<b>Availability</b>	1-3 business days
<b>Species Reactivity</b>	Human
<b>Format</b>	Purified
<b>Clonality</b>	Monoclonal (mouse origin)
<b>Isotype</b>	Mouse IgG
<b>Clone Name</b>	LGRN/7357
<b>Purity</b>	Protein A/G affinity
<b>UniProt</b>	Q9UJ71
<b>Localization</b>	Cell surface, Cytoplasm
<b>Applications</b>	Immunohistochemistry (FFPE) : 1-2ug/ml for 30 min at RT
<b>Limitations</b>	This Langerin antibody is available for research use only.



IHC staining of FFPE human skin tissue with Langerin antibody (clone LGRN/7357).  
 HIER: boil tissue sections in pH 9 10mM Tris with 1mM EDTA for 20 min and allow to cool before testing.



SDS-PAGE analysis of purified, BSA-free Langerin antibody (clone LGRN/7357) as confirmation of integrity and purity.

## Description

Langerhans cells (LCs) are a subset of immature dendritic cells (DCs) that specifically localize in the epidermis and other mucosal epithelia. Epidermal LCs possess strong immuno-stimulatory capacity and play a central role in the initiation and regulation of immune responses. Langerin (CD207) is a  $\text{Ca}^{2+}$ -dependent, C-type lectin domain containing, type II transmembrane protein that induces epidermal LCs to differentiate into Birbeck granules (BG). BGs are organelles with superimposing and zipper membranes that influence proper class I type antigen presentation to the circulating T cells. Human spleen, lymph node, thymus, liver, lung and heart express Langerin protein.

## Application Notes

Optimal dilution of the Langerin antibody should be determined by the researcher.

## Immunogen

A recombinant partial protein sequence (within amino acids 50-250) from the human protein was used as the immunogen for the Langerin antibody.

## Storage

Aliquot the Langerin antibody and store frozen at  $-20^{\circ}\text{C}$  or colder. Avoid repeated freeze-thaw cycles.