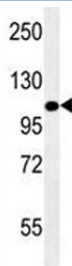


## LAMP2 Antibody [clone 157CT16.6.6] (F40228)

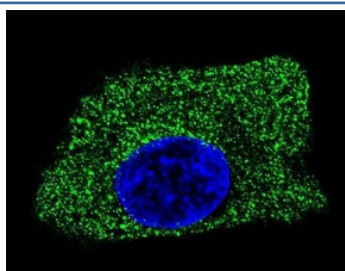
Catalog No.	Formulation	Size
F40228-0.4ML	In 1X PBS, pH 7.4, with 0.09% sodium azide	0.4 ml
F40228-0.08ML	In 1X PBS, pH 7.4, with 0.09% sodium azide	0.08 ml

[Bulk quote request](#)

<b>Availability</b>	1-3 business days
<b>Species Reactivity</b>	Human, Mouse
<b>Format</b>	Purified
<b>Clonality</b>	Monoclonal (mouse origin)
<b>Isotype</b>	Mouse IgG1, k
<b>Clone Name</b>	157CT16.6.6
<b>Purity</b>	Purified
<b>UniProt</b>	P13473
<b>Applications</b>	Western Blot : 1:100-1:1000 Immunofluorescence : 1:10-1:50
<b>Limitations</b>	This LAMP2 antibody is available for research use only.



LAMP2 antibody western blot analysis in mouse NIH3T3 lysate. The protein can be extensively glycosylated and visualized from 45~110 kDa.



Confocal immunofluorescent analysis of LAMP2 antibody with HepG2 cells followed by Alexa Fluor 488-conjugated goat anti-mouse IgG (green). DAPI was used as a nuclear counterstain (blue).

## Description

Implicated in tumor cell metastasis. May function in protection of the lysosomal membrane from autodigestion, maintenance of the acidic environment of the lysosome, adhesion when expressed on the cell surface (plasma membrane), and inter-and intracellular signal transduction. Protects cells from the toxic effects of methylating mutagens.

## Application Notes

The stated application concentrations are suggested starting amounts. Titration of the LAMP2 antibody may be required due to differences in protocols and secondary/substrate sensitivity.

## Immunogen

This LAMP2 antibody was produced from a mouse immunized with LAMP2 recombinant protein.

## Storage

Store at 4oC for up to one month. For long term, aliquot the LAMP2 antibody and store frozen at -20oC or colder. Avoid repeated freeze-thaw cycles.