

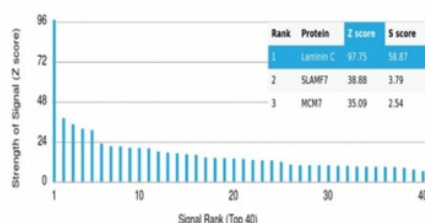
Laminin gamma 1 Antibody / LAMC1 / LAMB2 [clone LAMC1/3162] (V8865)

Catalog No.	Formulation	Size
V8865-100UG	0.2 mg/ml in 1X PBS with 0.1 mg/ml BSA (US sourced), 0.05% sodium azide	100 ug
V8865-20UG	0.2 mg/ml in 1X PBS with 0.1 mg/ml BSA (US sourced), 0.05% sodium azide	20 ug
V8865SAF-100UG	1 mg/ml in 1X PBS; BSA free, sodium azide free	100 ug

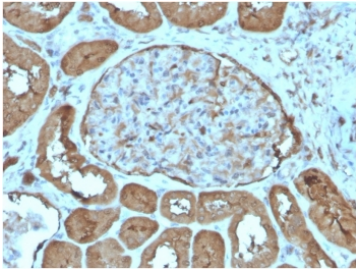
[Bulk quote request](#)

Availability	1-3 business days
Species Reactivity	Human
Format	Purified
Clonality	Monoclonal (mouse origin)
Isotype	Mouse IgG1, kappa
Clone Name	LAMC1/3162
Purity	Protein A/G affinity
UniProt	P11047
Localization	Basement membrane
Applications	Immunohistochemistry (FFPE) : 1-2ug/ml
Limitations	This Laminin gamma 1 antibody is available for research use only.

Human Protein Microarray Specificity Validation



Analysis of HuProt(TM) microarray containing more than 19,000 full-length human proteins using Laminin gamma 1 antibody (clone LAMC1/3162). These results demonstrate the foremost specificity of the LAMC1/3162 mAb. Z- and S- score: The Z-score represents the strength of a signal that an antibody (in combination with a fluorescently-tagged anti-IgG secondary Ab) produces when binding to a particular protein on the HuProt(TM) array. Z-scores are described in units of standard deviations (SD's) above the mean value of all signals generated on that array. If the targets on the HuProt(TM) are arranged in descending order of the Z-score, the S-score is the difference (also in units of SD's) between the Z-scores. The S-score therefore represents the relative target specificity of an Ab to its intended target.



IHC staining of FFPE human kidney tissue with Laminin gamma 1 antibody (clone LAMC1/3162). HIER: boil tissue sections in pH 9 10mM Tris with 1mM EDTA for 20 min and allow to cool before testing.

Description

Laminins are large hetero-trimeric, non-collagenous glycoproteins composed of alpha, beta, and gamma chains. This MAb reacts with laminin B2/1 chain of ~210 kDa and does not cross-react with other basement membrane components or fibronectin.

Application Notes

Optimal dilution of the Laminin gamma 1 antibody should be determined by the researcher.

Immunogen

Murine EHS laminin preparation was used as the immunogen for the Laminin gamma 1 antibody.

Storage

Aliquot the Laminin gamma 1 antibody and store frozen at -20oC or colder. Avoid repeated freeze-thaw cycles.