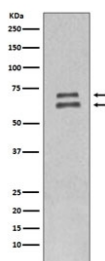


Lamin A/C Antibody [clone BEO-12] (RQ4998)

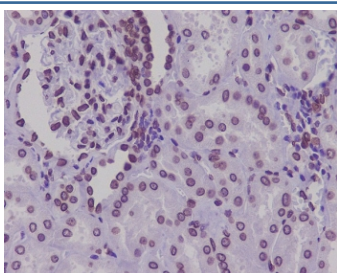
Catalog No.	Formulation	Size
RQ4998	Antibody in PBS with 0.02% sodium azide, 50% glycerol and 0.4-0.5mg/ml BSA	100 ul

[Bulk quote request](#)

Availability	1-2 weeks
Species Reactivity	Human
Format	Purified
Clonality	Rabbit Monoclonal
Isotype	Rabbit IgG
Clone Name	BEO-12
Purity	Affinity purified
UniProt	P02545
Localization	Nuclear
Applications	Western Blot : 1:500-1:2000 Immunohistochemistry (FFPE) : 1:50-1:200
Limitations	This Lamin A/C antibody is available for research use only.



Western blot testing of human HeLa cell lysate with Lamin A/C antibody. Predicted molecular weight ~74 & 65 kDa.



IHC staining of FFPE human kidney tissue with Lamin A/C antibody. HIER: boil tissue sections in pH6, 10mM citrate buffer, for 10-20 min and allow to cool before testing.

Description

Lamins are components of the nuclear lamina, a fibrous layer on the nucleoplasmic side of the inner nuclear membrane, which is thought to provide a framework for the nuclear envelope and may also interact with chromatin. [UniProt]

Application Notes

Optimal dilution of the Lamin A/C antibody should be determined by the researcher.

Immunogen

A synthetic peptide specific to human Lamin A/C / LMNA was used as the immunogen for the Lamin A/C antibody.

Storage

Store the Lamin A/C antibody at -20oC.