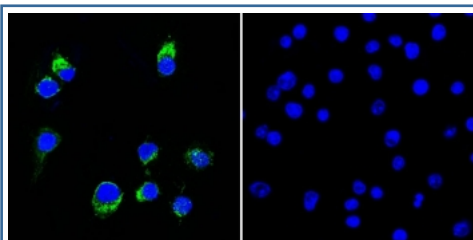


Lambda Light Chain Antibody [clone HP6054] (V3151CF488)

Catalog No.	Formulation	Size
V3151CF488-100T	500 ul at 0.1 mg/ml with 0.1 mg/ml BSA (US sourced), 0.05% sodium azide	100 Tests

Bulk quote request

Availability	1-3 business days
Species Reactivity	Human
Format	CF488 Conjugate
Clonality	Monoclonal (mouse origin)
Isotype	Mouse IgG2a, kappa
Clone Name	HP6054
Purity	Protein G affinity chromatography
UniProt	P01701, P01842
Localization	Cell surface, cytoplasmic, secreted
Applications	Flow Cytometry : 5ul per test per one 10 ⁶ cells in 0.1ml or 5ul per 100ul of whole blood Immunofluorescence : 1-2ug/ml
Limitations	This Lambda Light Chain antibody is available for research use only.



(Left) Immunofluorescent staining of permeabilized human Ramos cells with CF488-labeled Lambda Light Chain antibody (clone HP6054, green) and DAPI (blue).
(Right) Negative control.

Description

This MAb is specific to lambda light chain of immunoglobulin and shows no cross-reaction with lambda light chain or any of the five heavy chains. In mammals, the two light chains in an antibody are always identical, with only one type of light chain, kappa or lambda. The ratio of Kappa to Lambda is 70:30. However, with the occurrence of multiple myeloma or other B-cell malignancies this ratio is disturbed. Antibody to the lambda light chain is reportedly useful in the identification of leukemias, plasmacytomas, and certain non-Hodgkin's lymphomas. Demonstration of clonality in lymphoid infiltrates indicates that the infiltrate is malignant.

Application Notes

Optimal dilution of the Lambda Light Chain antibody should be determined by the researcher.

Immunogen

Purified human IgG myeloma proteins were used as the immunogen for this Lambda Light Chain antibody.

Storage

Store the Lambda Light Chain antibody at 2-8oC, protected from light.