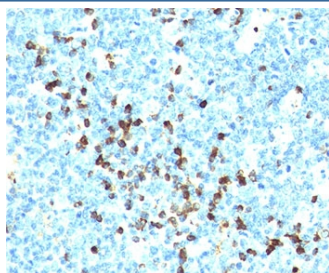


Lambda Light Chain Antibody Cocktail [clone LcN-2 + ICO-106] (V2155)

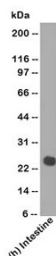
Catalog No.	Formulation	Size
V2155-100UG	0.2 mg/ml in 1X PBS with 0.1 mg/ml BSA (US sourced) and 0.05% sodium azide	100 ug
V2155-20UG	0.2 mg/ml in 1X PBS with 0.1 mg/ml BSA (US sourced) and 0.05% sodium azide	20 ug
V2155SAF-100UG	1 mg/ml in 1X PBS; BSA free, sodium azide free	100 ug

Bulk quote request

Species Reactivity	Human
Format	Purified
Clonality	Monoclonal (mouse origin)
Isotype	Mouse IgG2a, kappa + Mouse IgG1, kappa
Clone Name	LcN-2 + ICO-106
Purity	Protein G affinity chromatography
Buffer	1X PBS, pH 7.4
Gene ID	3535
Localization	Cell surface, cytoplasmic and secreted
Applications	Flow Cytometry : 0.5-1ug/10 ⁶ cells Immunofluorescence : 0.5-1ug/ml Western Blot : 0.5-1ug/ml
Limitations	This Lambda Light Chain antibody cocktail is available for research use only.



IHC testing of human tonsil stained with Lambda Light Chain antibody cocktail (LcN-2 + ICO-106).



Western blot testing of human samples using Lambda Light Chain antibody cocktail (LcN-2 + ICO-106).

Description

This antibody cocktail is specific to lambda light chain of immunoglobulin and shows no cross-reaction with kappa light chain or any of the five heavy chains. In mammals, the two light chains in an antibody are always identical, with only one type of light chain, kappa or lambda. In general, the ratio of Kappa to Lambda is 3:1. However, with the occurrence of multiple myeloma or other B-cell malignancies this ratio is disturbed. Lambda light chain antibody is reportedly useful in the identification of leukemias, plasmacytomas, and certain non-Hodgkin's lymphomas. Demonstration of clonality in lymphoid infiltrates indicates that the infiltrate is malignant.

Application Notes

The concentration stated for each application is a general starting point. Variations in protocols, secondaries and substrates may require the antibody to be titrated up or down for optimal performance.

1. Staining of formalin-fixed tissues requires boiling tissue sections in 10mM Citrate Buffer, pH 6.0, for 10-20 min followed by cooling at RT for 20 minutes.
2. The prediluted format is supplied in a dropper bottle and is optimized for use in IHC. After epitope retrieval step (if required), drip mAb solution onto the tissue section and incubate at RT for 30 min.

Immunogen

Purified human Ig (LcN-2 and ICO-106) was used as the immunogen for this Lambda Light Chain antibody cocktail.

Storage

Store the Lambda Light Chain antibody cocktail at 2-8°C (with azide) or aliquot and store at -20°C or colder (without azide).

Alternate Names

Bence Jones Protein; BJP; IGLC 1/2/3; Mcg Marker; Paraprotein, Lambda

References (3)