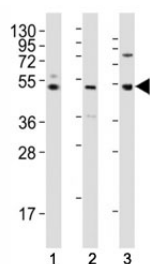


LAG3 Antibody / CD223 (F50003)

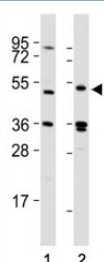
Catalog No.	Formulation	Size
F50003-0.4ML	In 1X PBS, pH 7.4, with 0.09% sodium azide	0.4 ml
F50003-0.08ML	In 1X PBS, pH 7.4, with 0.09% sodium azide	0.08 ml

[Bulk quote request](#)

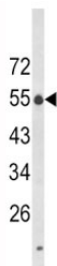
Availability	1-3 business days
Species Reactivity	Human
Format	Antigen affinity purified
Clonality	Polyclonal (rabbit origin)
Isotype	Rabbit Ig
Purity	Antigen affinity
UniProt	P18627
Applications	Western Blot : 1:1000 IHC (Paraffin) : 1:10-1:50
Limitations	This LAG3 antibody is available for research use only.



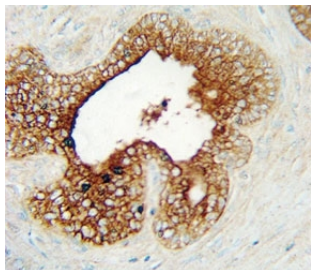
Western blot testing of LAG3 antibody at 1:2000 dilution tested on human lysates, Lane 1: K562; 2: liver; 3: ovary; Predicted molecular weight ~54 kDa.



Western blot testing of LAG3 antibody at 1:2000 dilution tested on lysates from Lane 1: 293T; 2: human spleen; Predicted molecular weight ~54 kDa.



Western blot analysis of LAG3 antibody in K562 lysate. Predicted molecular weight ~54 kDa.



LAG3 antibody immunohistochemistry analysis in formalin fixed and paraffin embedded human prostate carcinoma.

Description

Lymphocyte-activation protein 3 belongs to Ig superfamily and contains 4 extracellular Ig-like domains.

Application Notes

Titration of the LAG3 antibody may be required due to differences in protocols and secondary/substrate sensitivity.

Immunogen

A portion of amino acids 103-132 from the human protein was used as the immunogen for this LAG3 antibody.

Storage

Aliquot the LAG3 antibody and store frozen at -20°C or colder. Avoid repeated freeze-thaw cycles.