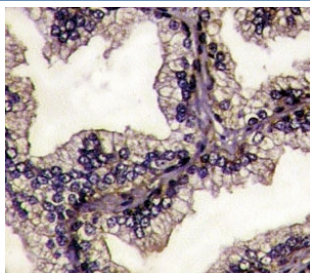


## Lactoferrin Antibody (F50631)

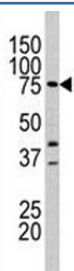
Catalog No.	Formulation	Size
F50631-0.4ML	In 1X PBS, pH 7.4, with 0.09% sodium azide	0.4 ml
F50631-0.08ML	In 1X PBS, pH 7.4, with 0.09% sodium azide	0.08 ml

**Bulk quote request**

<b>Availability</b>	1-3 business days
<b>Species Reactivity</b>	Human, Mouse
<b>Format</b>	Purified
<b>Clonality</b>	Polyclonal (rabbit origin)
<b>Isotype</b>	Rabbit Ig
<b>Purity</b>	Purified
<b>UniProt</b>	P02788
<b>Applications</b>	IHC (Paraffin) : 1:10-1:50 Western Blot : 1:50-1:100
<b>Limitations</b>	This Lactoferrin antibody is available for research use only.



IHC analysis of FFPE prostate carcinoma tissue stained with Lactoferrin antibody.



Western blot analysis of Lactoferrin antibody (1:60 dilution) and mouse heart tissue lysate. Predicted molecular weight: ~78/73kDa (isoforms 1/2).

## Description

This protein is a member of the transferrin family of metal-binding proteins found in milk and other secretory fluids and also in blood. It shows multifunctional properties of which the bacteriostatic and bactericidal effects are the best known.

## Application Notes

Titration of the Lactoferrin antibody may be required due to differences in protocols and secondary/substrate sensitivity.

## Immunogen

A portion of amino acids 219-248 from the human protein was used as the immunogen for this Lactoferrin antibody.

## Storage

Aliquot the Lactoferrin antibody and store frozen at -20oC or colder. Avoid repeated freeze-thaw cycles.