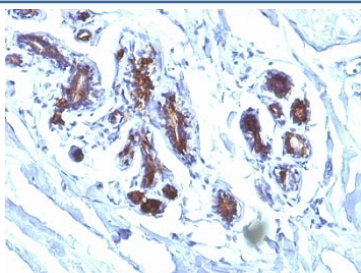


## Lactadherin Antibody [clone EDM45] (V2705)

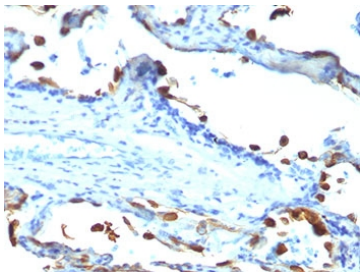
Catalog No.	Formulation	Size
V2705-100UG	0.2 mg/ml in 1X PBS with 0.1 mg/ml BSA (US sourced) and 0.05% sodium azide	100 ug
V2705-20UG	0.2 mg/ml in 1X PBS with 0.1 mg/ml BSA (US sourced) and 0.05% sodium azide	20 ug
V2705SAF-100UG	1 mg/ml in 1X PBS; BSA free, sodium azide free	100 ug
V2705IHC-7ML	Prediluted in 1X PBS with 0.1 mg/ml BSA (US sourced) and 0.05% sodium azide; *For IHC use only*	7 ml

**Bulk quote request**

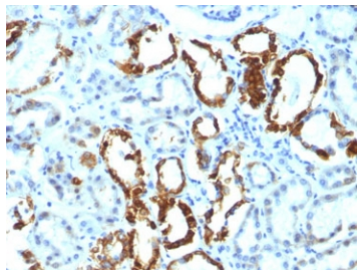
<b>Availability</b>	1-3 business days
<b>Species Reactivity</b>	Human
<b>Format</b>	Purified
<b>Clonality</b>	Monoclonal (mouse origin)
<b>Isotype</b>	Mouse IgG1, kappa
<b>Clone Name</b>	EDM45
<b>Purity</b>	Protein G affinity chromatography
<b>UniProt</b>	Q08431
<b>Localization</b>	Cell surface & cytoplasmic
<b>Applications</b>	Flow Cytometry : 0.5-1ug/10 <sup>6</sup> cells Immunofluorescence : 1-2ug/ml Immunohistochemistry (FFPE) : 0.5-1ug/ml for 30 min at RT
<b>Limitations</b>	This Lactadherin antibody is available for research use only.



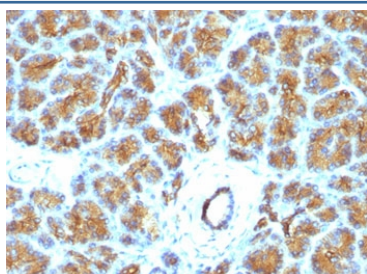
IHC analysis of formalin-fixed, paraffin-embedded human breast carcinoma stained with Lactadherin antibody (EDM45)



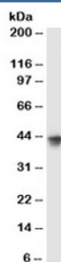
IHC analysis of FFPE human lung carcinoma tested with Lactadherin antibody (EDM45)



IHC analysis of FFPE human renal cell carcinoma tested with Lactadherin antibody (EDM45)



IHC analysis of FFPE human pancreas tested with Lactadherin antibody (EDM45)



Western blot testing of MCF7 cell lysate with Lactadherin antibody (clone EDM45). Expected molecular weight: 30-66 kDa depending glycosylation level.

## Description

Recognizes a protein of 40-45kDa, identified as human milk fat globule membrane protein (HMFG), Lactadherin or MFG-EA. HMFG is present on normal human breast epithelial cells and cell lines derived from breast carcinomas, as well as to the outer surface of the human milk fat globule. HMFG is considered as a differentiation marker. It is useful as specific breast epithelial marker and can also provide a tool to study the role of the cell surface in normal and neoplastic mammary development.

## Application Notes

Optimal dilution of the Lactadherin antibody should be determined by the researcher.

1. Staining of formalin-fixed tissues requires boiling tissue sections in 10mM Citrate buffer, pH 6.0, for 10-20 min followed by cooling at RT for 20 min
2. The prediluted format is supplied in a dropper bottle and is optimized for use in IHC. After epitope retrieval step (if required), drip mAb solution onto the tissue section and incubate at RT for 30 min.

## Immunogen

A delipidated human milk fat globule membrane preparation was used as the immunogen for the Lactadherin antibody.

## **Storage**

Store the Lactadherin antibody at 2-8oC (with azide) or aliquot and store at -20oC or colder (without azide).