

L1CAM Antibody [clone UJ127] (V2182)

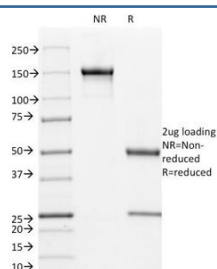
Catalog No.	Formulation	Size
V2182-100UG	0.2 mg/ml in 1X PBS with 0.1 mg/ml BSA (US sourced) and 0.05% sodium azide	100 ug
V2182-20UG	0.2 mg/ml in 1X PBS with 0.1 mg/ml BSA (US sourced) and 0.05% sodium azide	20 ug
V2182SAF-100UG	1 mg/ml in 1X PBS; BSA free, sodium azide free	100 ug



Citations (7)

[Bulk quote request](#)

Availability	Discontinued
Species Reactivity	Human
Format	Purified
Clonality	Monoclonal (mouse origin)
Isotype	Mouse IgG1, kappa
Clone Name	UJ127
Purity	Protein G affinity chromatography
Buffer	1X PBS, pH 7.4
UniProt	P32004
Gene ID	3897
Localization	Cell surface
Applications	ELISA (order BSA/sodium Azide-free Format For Coating) :
Limitations	This L1CAM antibody is available for research use only.



SDS-PAGE Analysis of Purified, BSA-Free L1CAM Antibody (clone UJ127). Confirmation of Integrity and Purity of the Antibody.

Description

This antibody recognizes a cell surface protein of 220-240kDa, identified as L1CAM (L1 cell adhesion molecule). The L1CAM gene, which is located in Xq28, is involved in three distinct conditions: 1) HSAS (hydrocephalus-stenosis of the aqueduct of Sylvius); 2) MASA (mental retardation, aphasia, shuffling gait, and adducted thumbs); and 3) SPG1 (spastic paraplegia). L1CAM also plays an important role in axon growth, fasciculation, and neural migration as well as in mediating neuronal differentiation. Expression of L1 protein is restricted to tissues arising from neuroectoderm. antibody to L1CAM is useful in the identification of primitive neuroectodermal tumors. The antibody binds to tumors of neuroectodermal and glial origin e.g. neuroblastoma and Schwannomas. It does not bind to pediatric or adult brain.

Application Notes

The concentration stated for each application is a general starting point. Variations in protocols, secondaries and substrates may require the antibody to be titrated up or down for optimal performance.

Immunogen

A homogenous suspension of 16 week human fetal brain was used as the immunogen for this L1CAM antibody.

Storage

Store the L1CAM antibody at 2-8oC (with azide) or aliquot and store at -20oC or colder (without azide).

References (1)